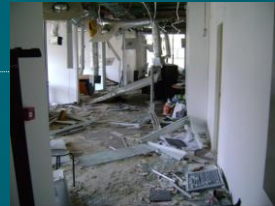




Buildings in Wellington and 'Bigger than expected' Earthquakes



Dave Brunson

QuakeCoRE Annual Meeting
4 & 5 September 2019, Nelson

1

Some Key Questions Relating to Existing Buildings



1. How well do we understand what we are facing?
2. How should we go about understanding the vulnerability of existing buildings to long duration strong shaking?

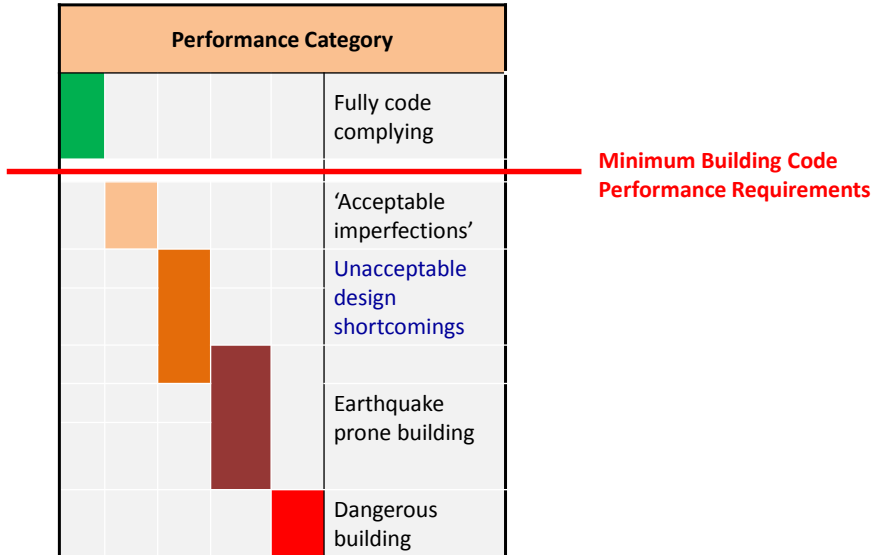
3. How will we address this vulnerability?



2

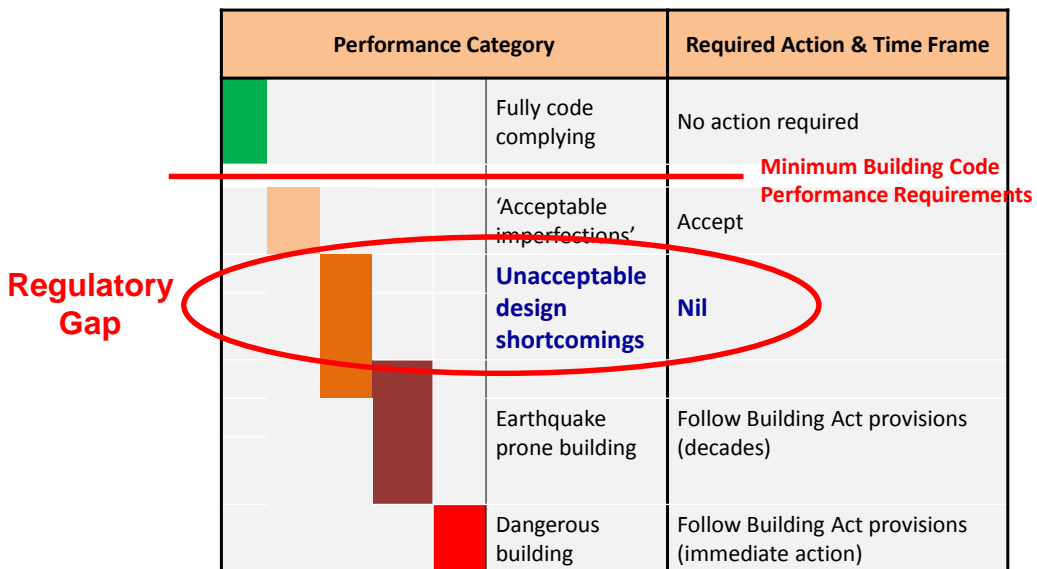
2

The Regulatory Context



3

The Regulatory Context



4



5

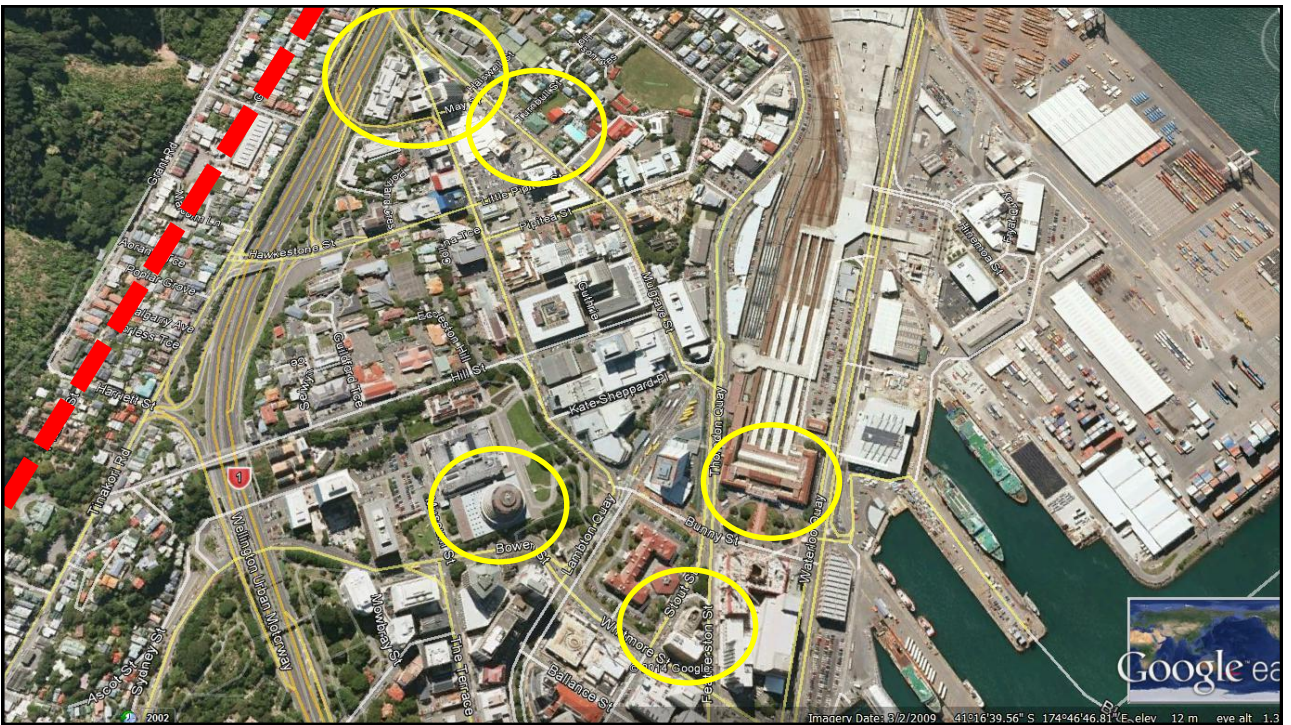
People Perspective: Continued Habitability



1. How will we get people back into undamaged multi-storey buildings after they have experienced two minutes of strong shaking in them?
2. How do we minimise the number of houses that people won't be able to live in?
3. Where will the earthquake response and recovery be managed from?

6

6



7

Areas of Need and Possible Starting Points



1. Clearer 'extreme event' scenarios to evaluate building vulnerabilities against
2. A standard methodology for evaluating (characterising) non-structural impacts at varying levels of shaking
3. Clearer strategies for repairing buildings
 - Damage assessment, design basis for repairs, regulatory acceptance
4. ??

8

8

