

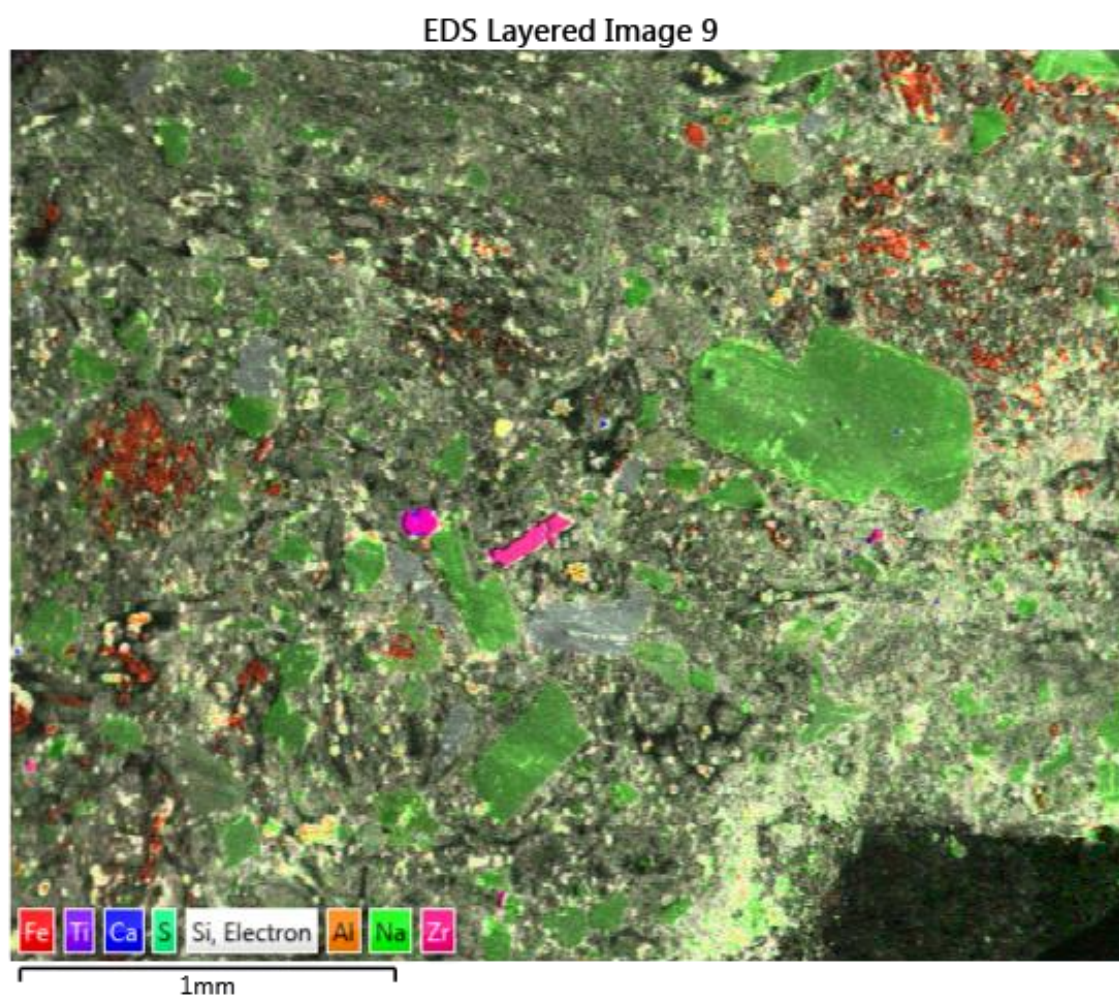
## Chapter 4 EDS image and spectra reports

---

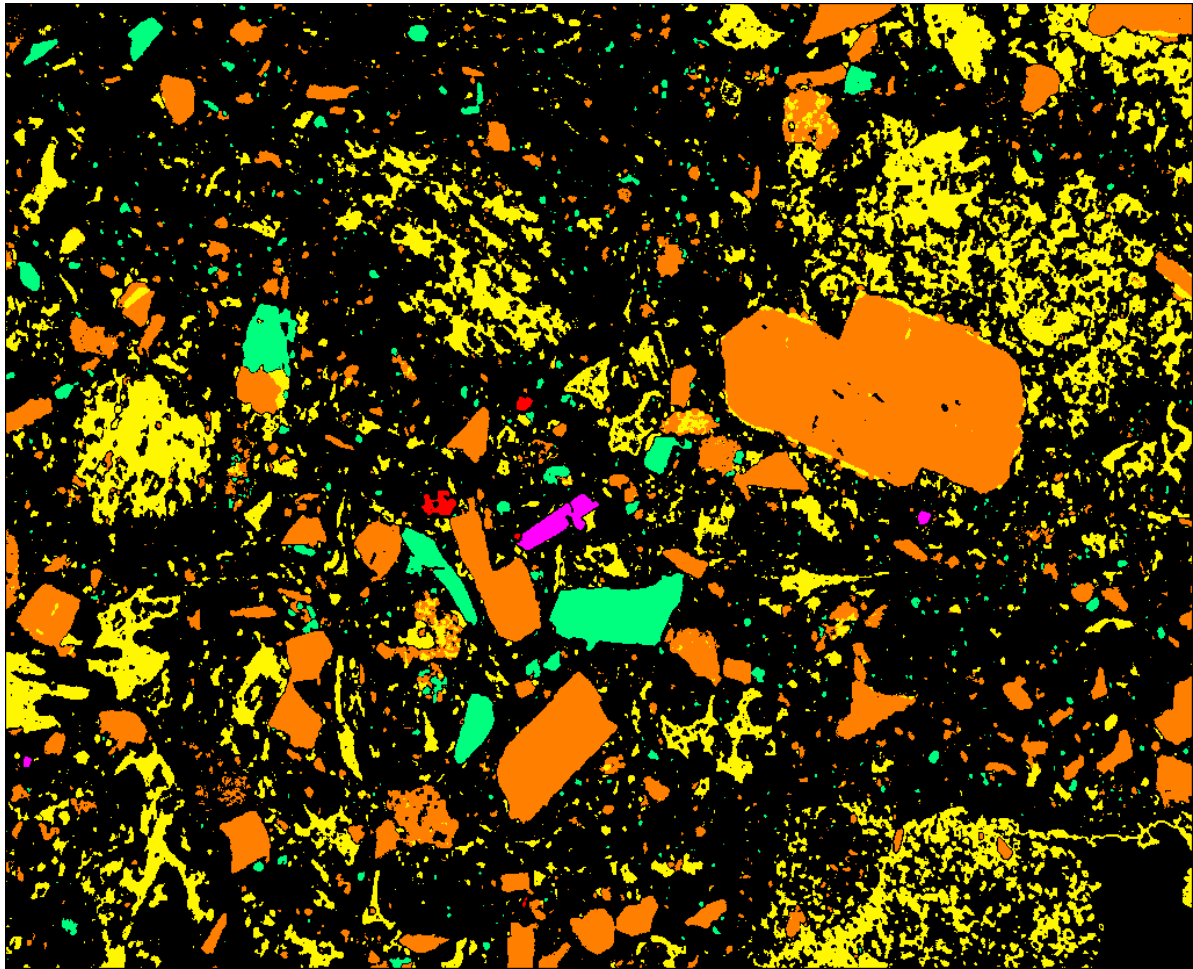
Samples included:

- Chapter 4: samples WKM15\_23 and WKM15\_60... pages 1 – 10
- Chapter 6: sample THM16\_adularia (2 crystals)... pages 11 – 15

WKM15\_23 EDS and BSE image 9: 37x magnification

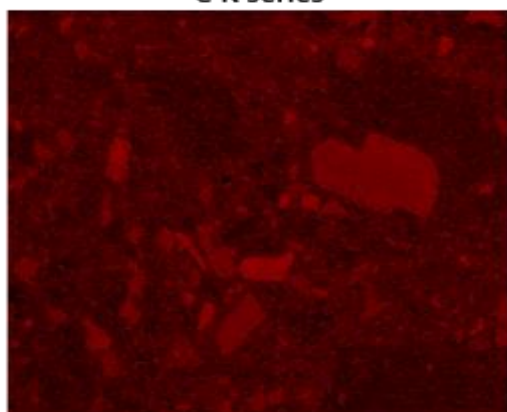


WKM15\_23 EDS phase analysis image



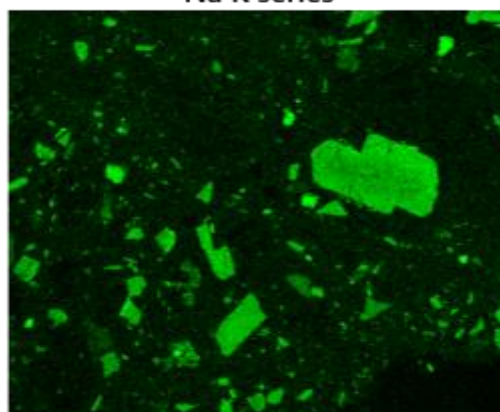
- Yellow = pumice and glass shards
- Orange = andesine feldspar
- Green = primary quartz
- Pink = zircon
- Red = titanite

C K series



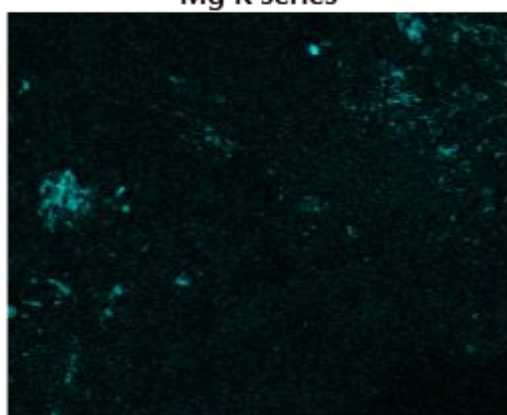
1mm

Na K series



1mm

Mg K series



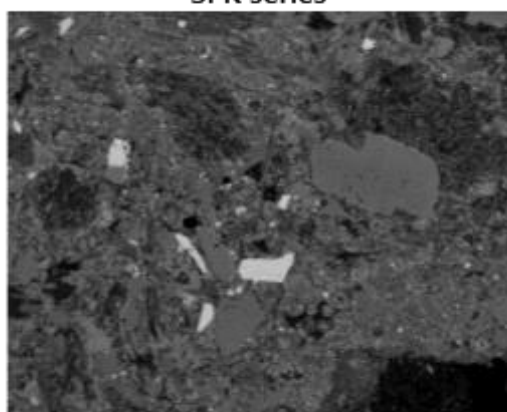
1mm

Al K $\alpha$ 1



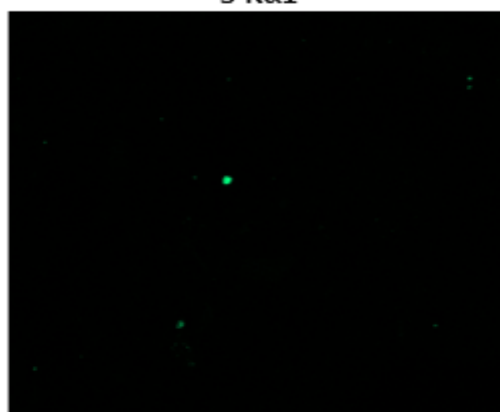
1mm

Si K series



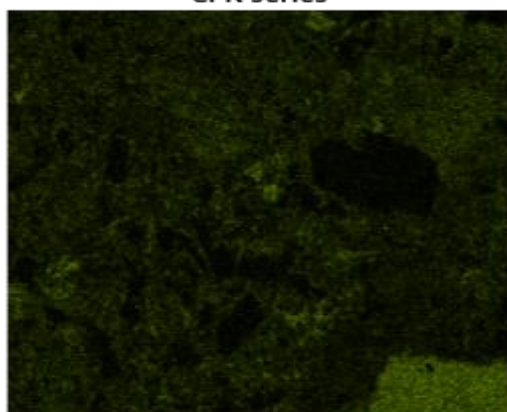
1mm

S K $\alpha$ 1



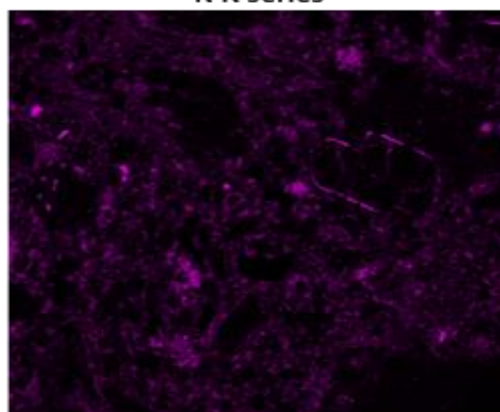
1mm

Cl K series



1mm

K K series



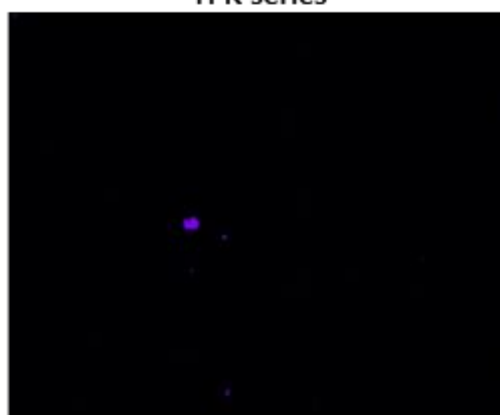
1mm

Ca K series



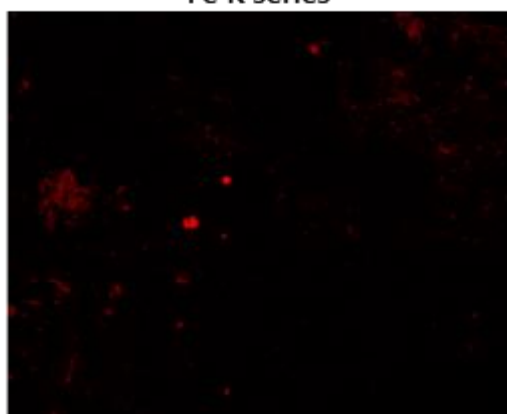
1mm

Ti K series



1mm

Fe K series



1mm

Zr L series

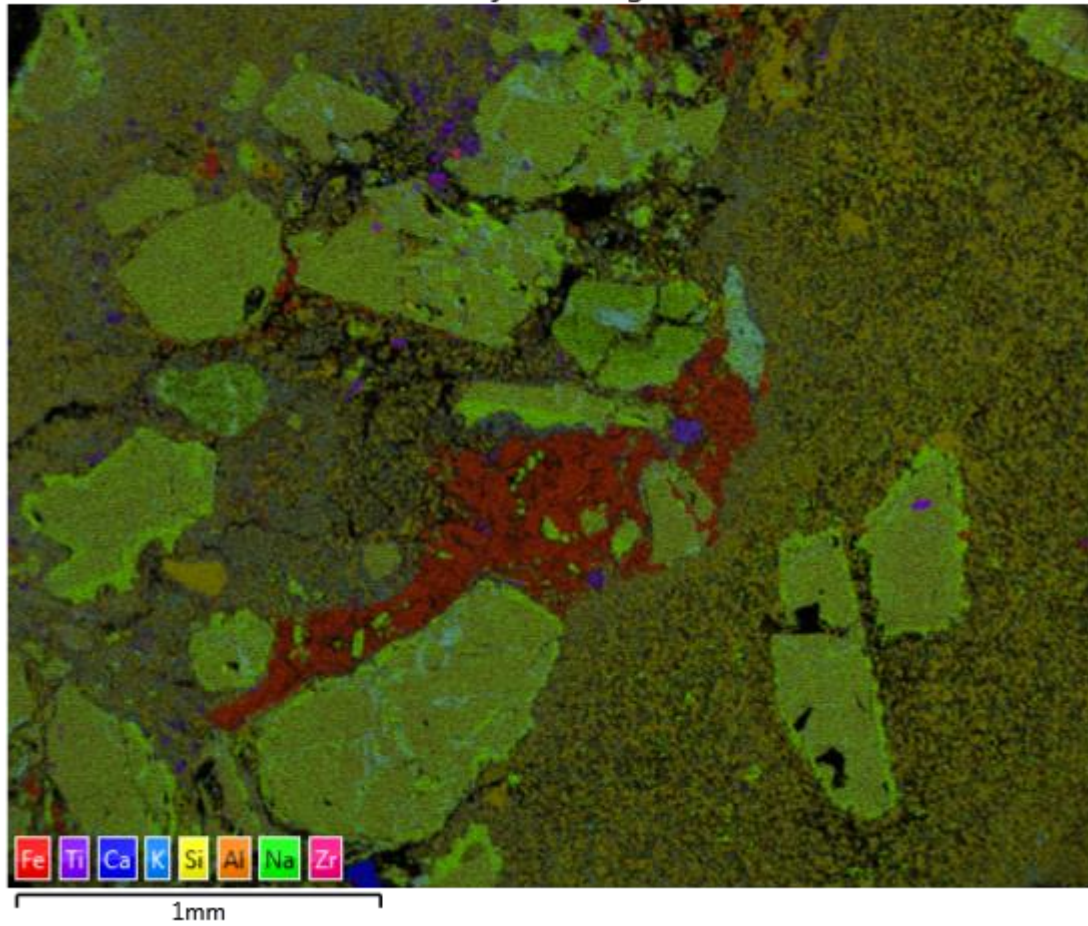


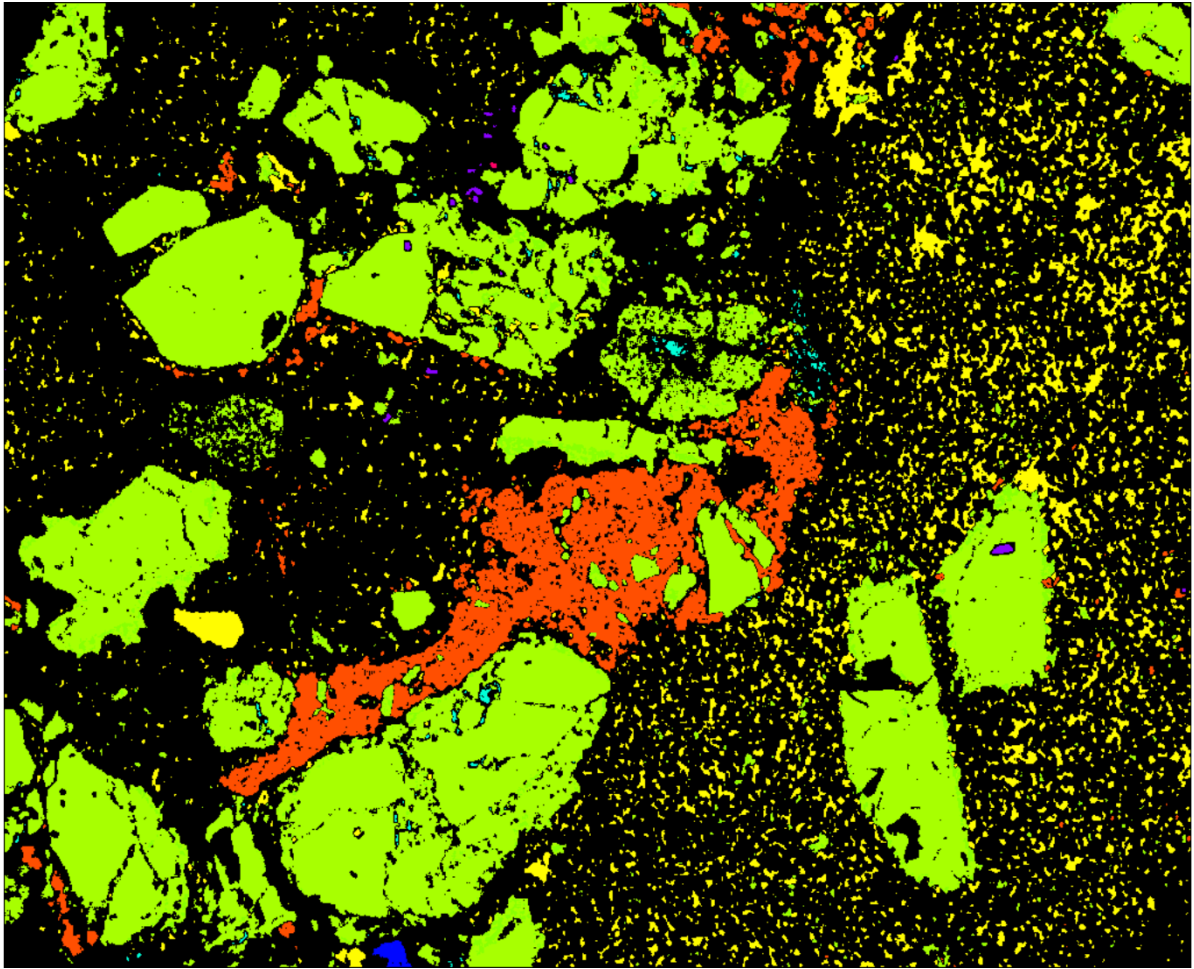
1mm



WKM15\_60 EDS and BSE image 10: 37x magnification

EDS Layered Image 10





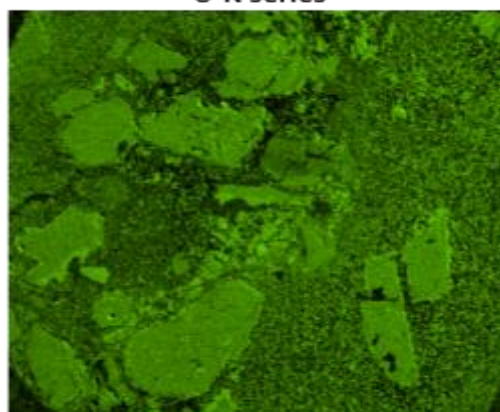
- Yellow = secondary and (minor) primary quartz
- Green = Andesine feldspar
- Orange = hydrothermal chlorite
- Purple = ilmenite and titanite
- Aqua = hydrothermal k-feldspar?
- Blue = hydrothermal calcite?

C K series



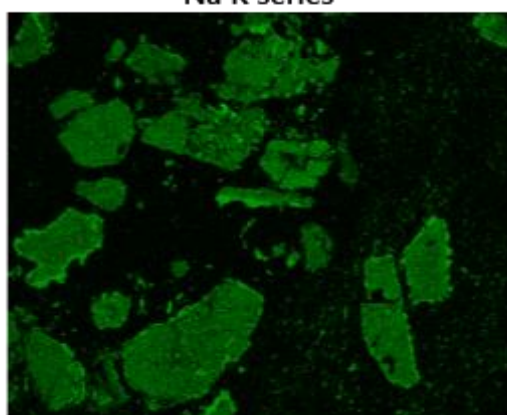
1mm

O K series



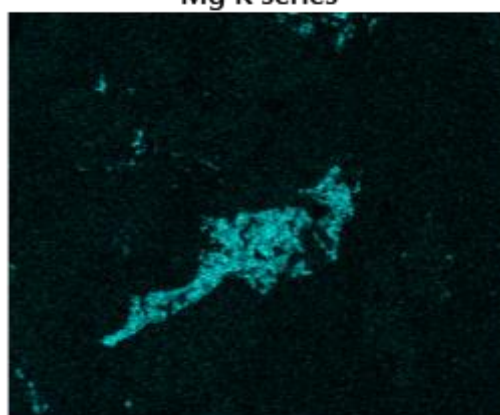
1mm

Na K series



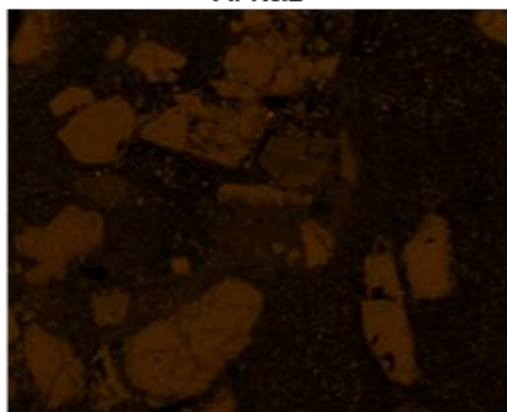
1mm

Mg K series



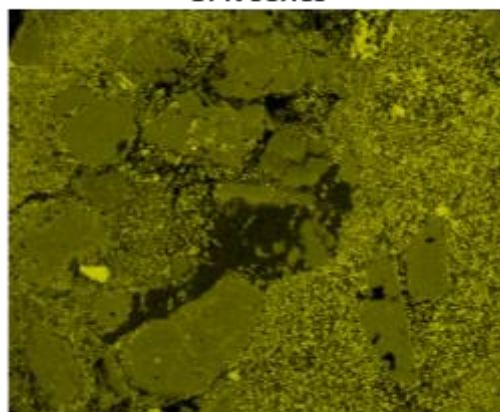
1mm

Al K $\alpha$ 1



1mm

Si K series



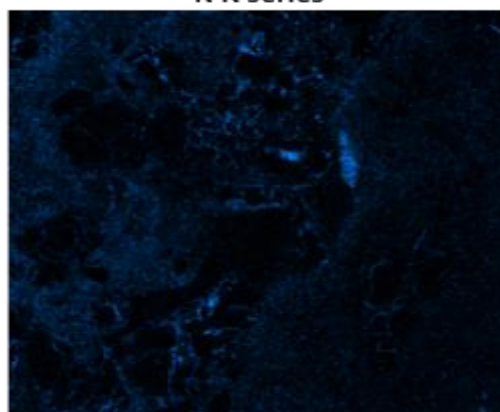
1mm

Cl K series



1mm

K K series



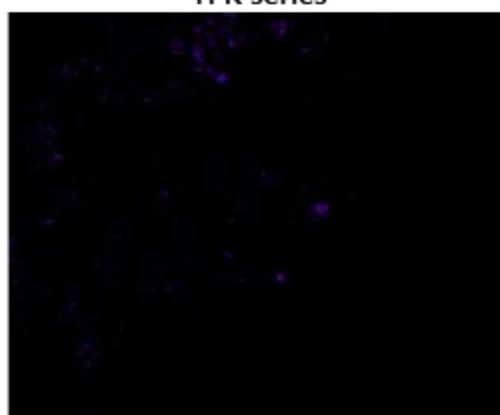
1mm

Ca K series



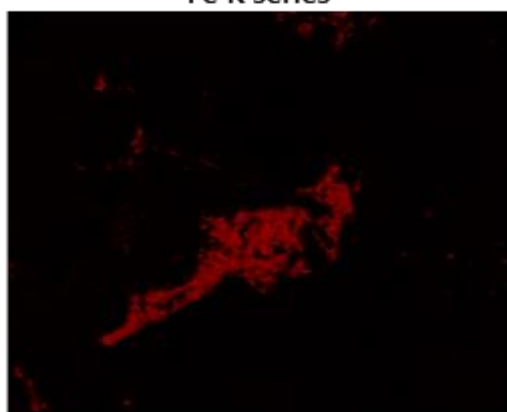
1mm

Ti K series



1mm

Fe K series



1mm

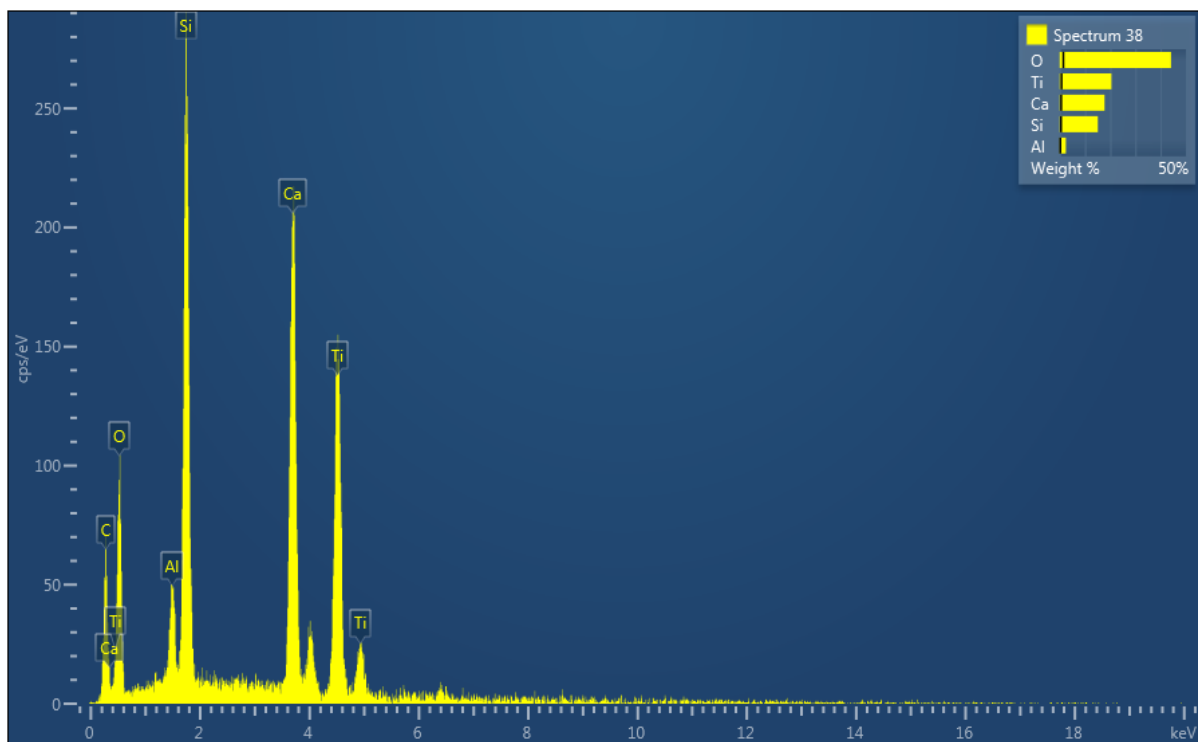
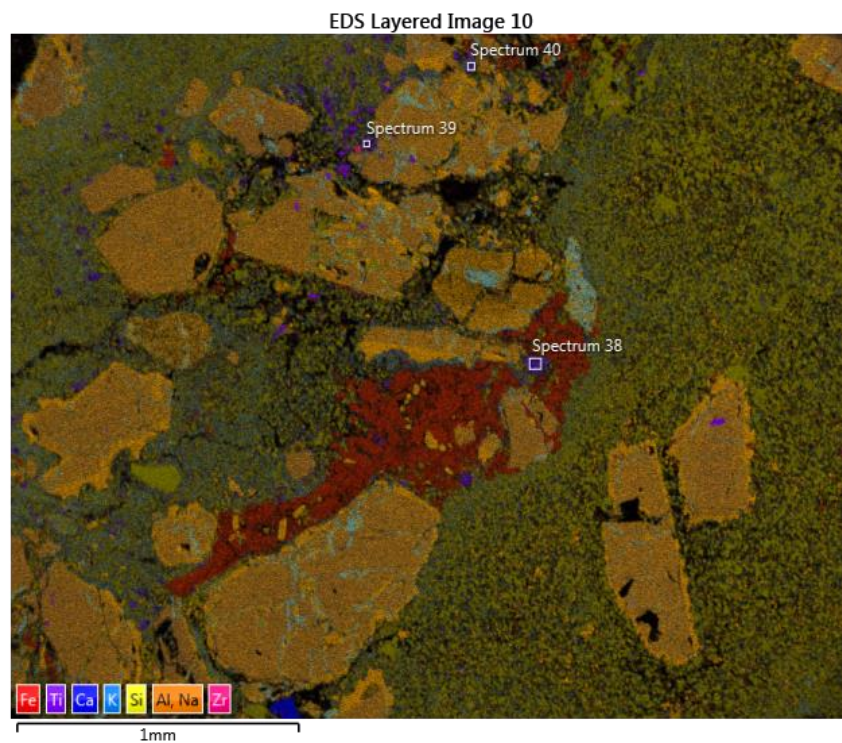
Zr L series

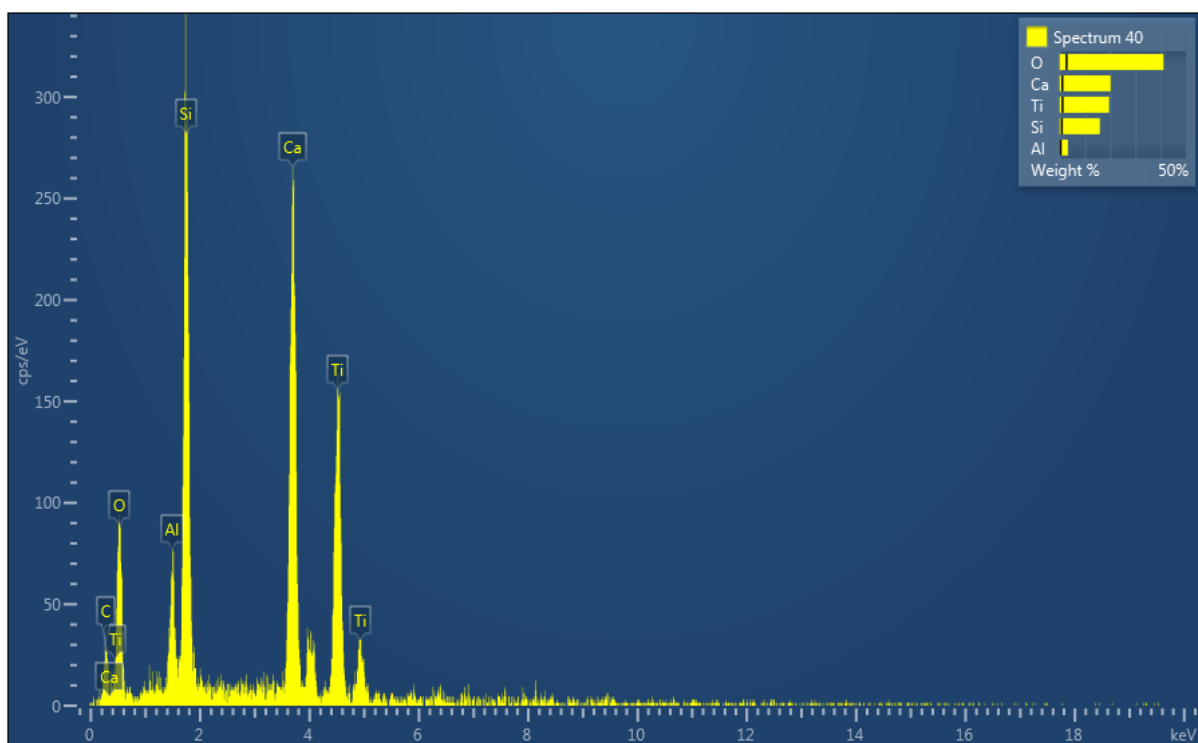
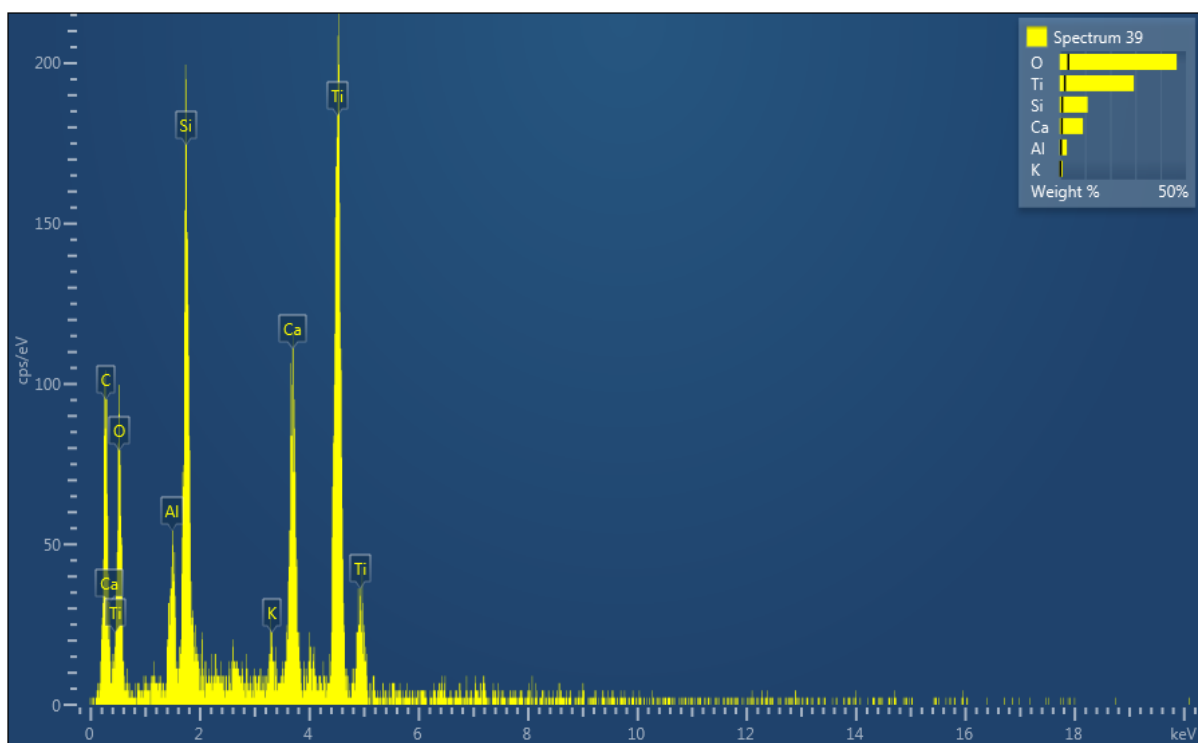


1mm



WKM15\_60 EDS target phase analysis (note different elemental colour coding form that above)



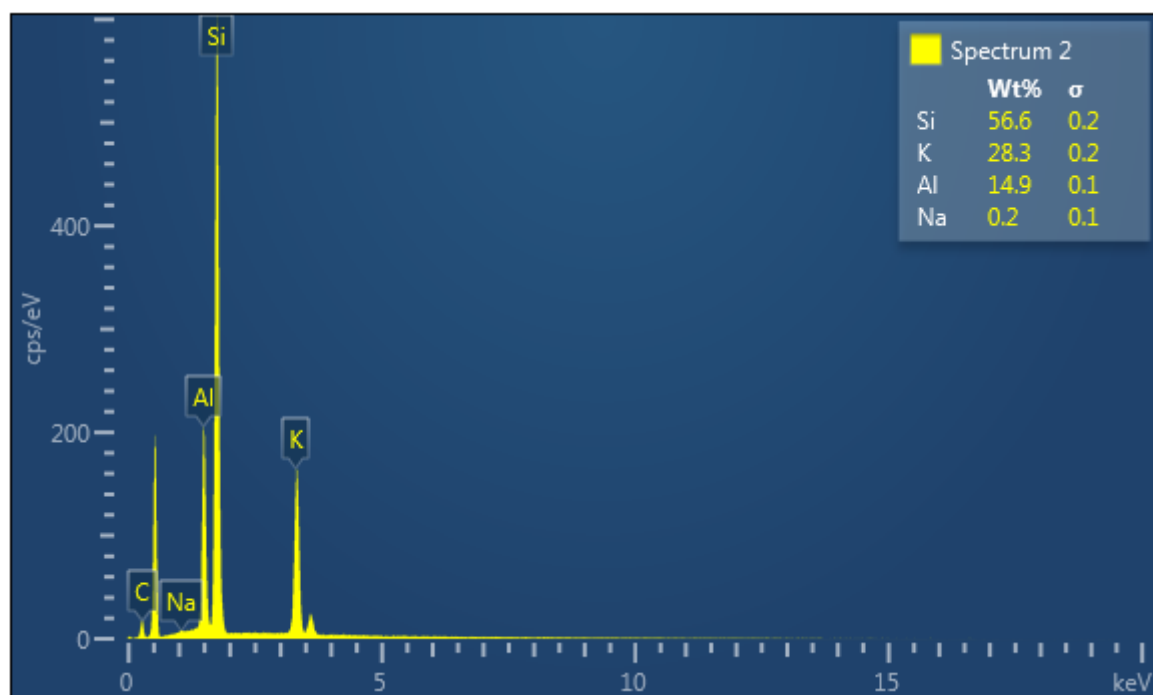
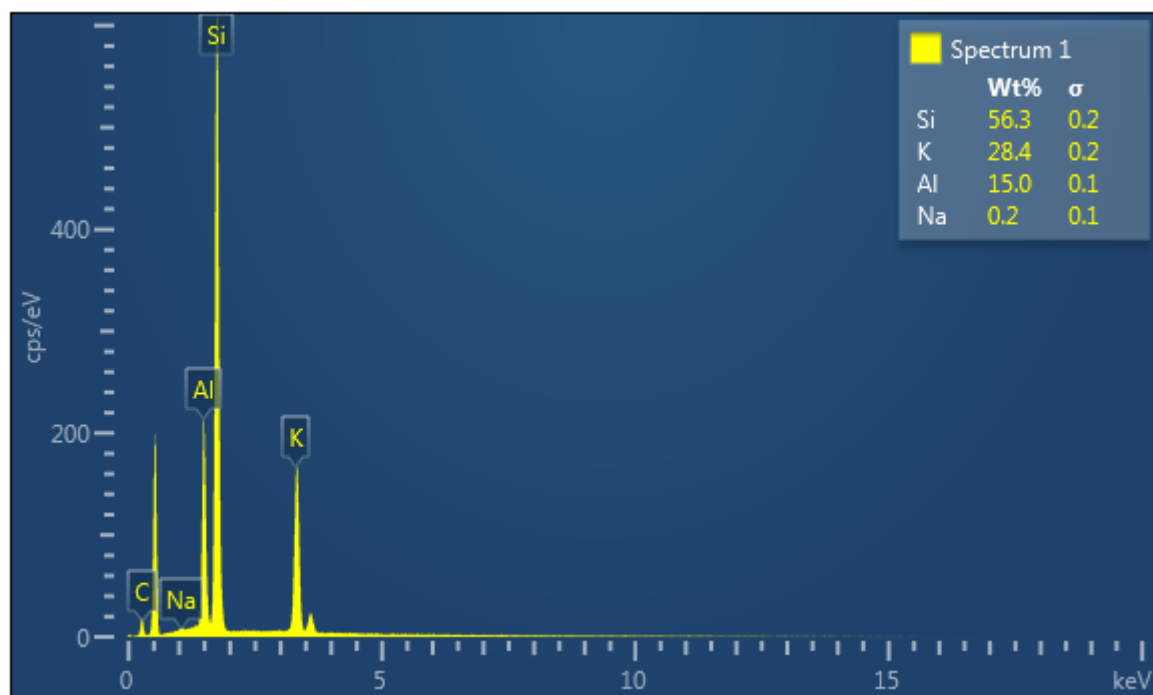


## Chapter 6 EDS image and spectra report (samples THM16\_adularia):

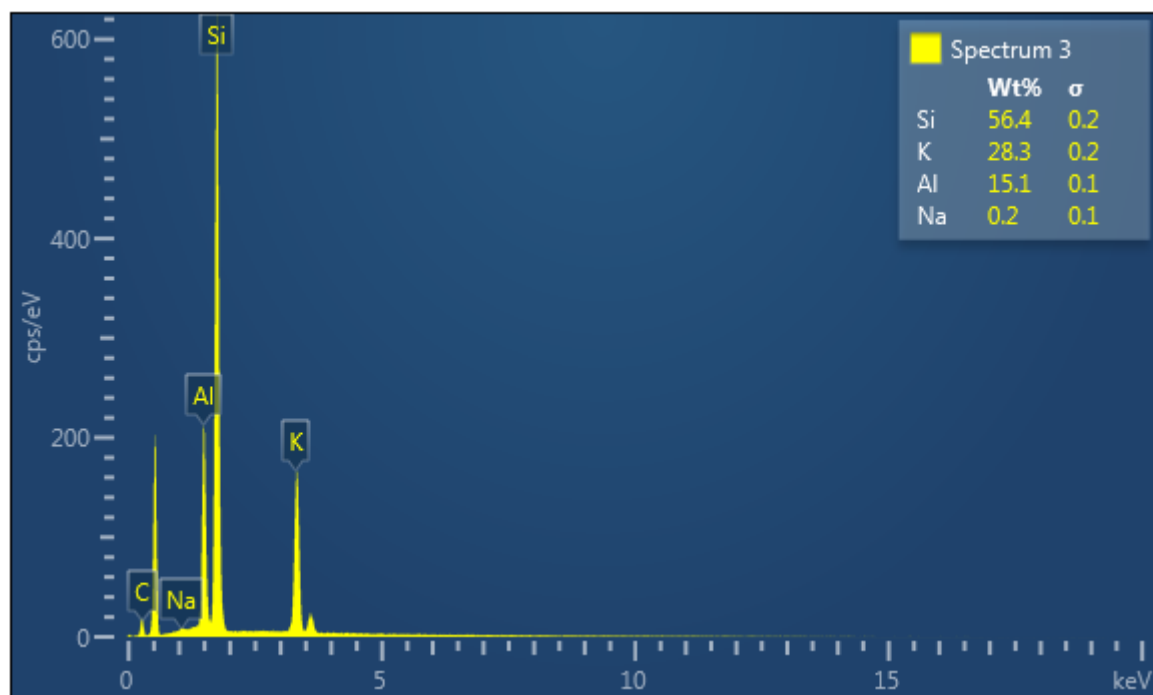
---

### *Selected adularia crystal sample 1*









*Selected adularia crystal sample 2*

