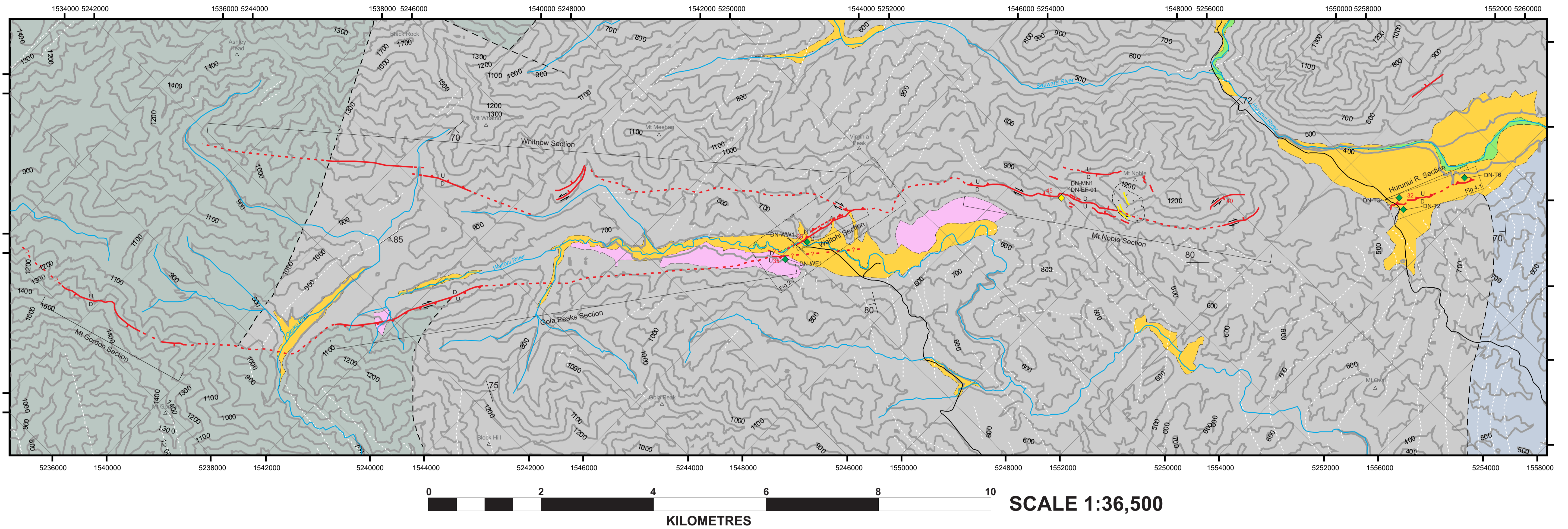


# GEOLOGICAL MAP OF THE NORTHERN ESK FAULT



## LEGEND

### General

- Road
- River/stream
- Contours (m)
- Named peak
- Seismic survey

### Sample Sites

- OSL Sample
- Radiocarbon Sample

### Structural

- Rents
- Contact
- Form lines
- Strike and dip

### Faults

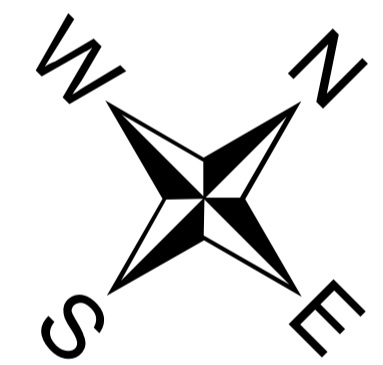
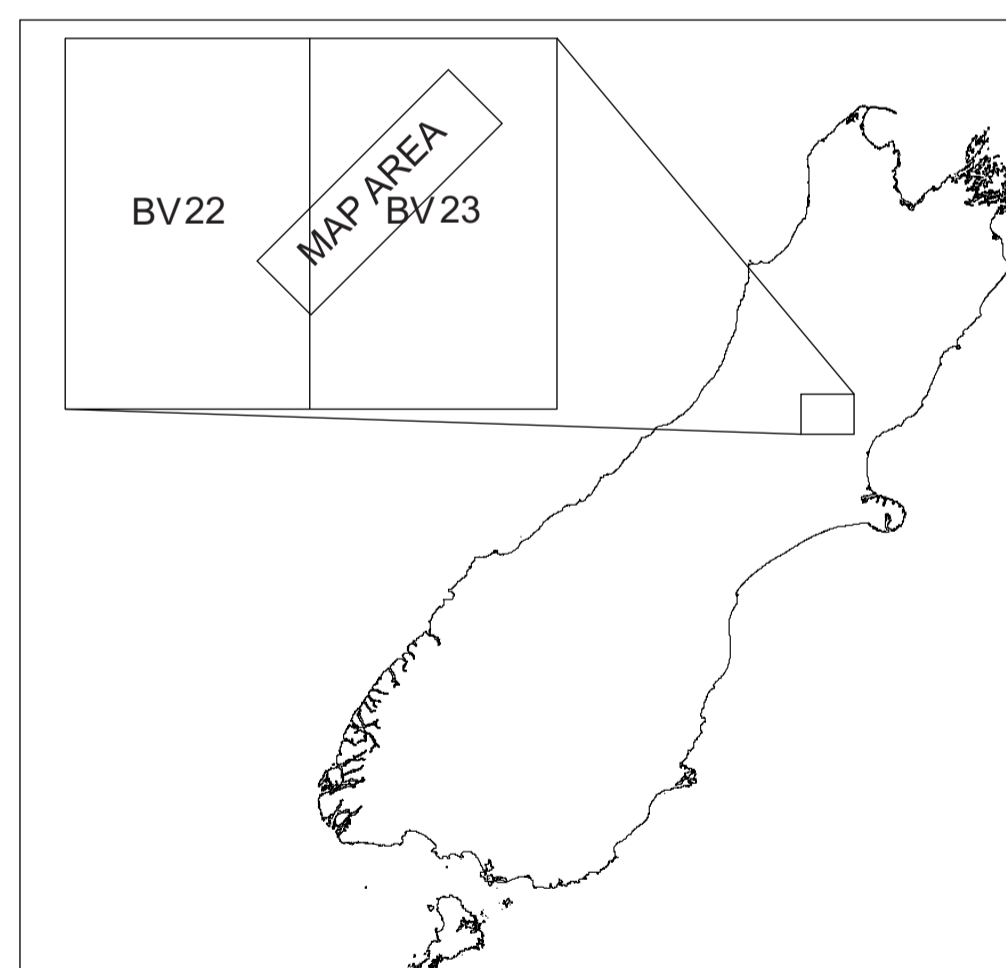
- Normal
- Reverse
- Inferred
- Projected
- Sense of slip
- Fault dip

### Geological

- Mesozoic Basement**
- Torlesse Supergroup**
- Thick, poorly bedded sandstone, minor mudstone, minor broken formation and melange
- Deformed sandstone and mudstone with blocks of red and green mudstone, limestone and basalt commonly as broken formation or melange
- Pahau Terrane - Well-bedded sandstone and mudstone and poorly bedded sandstone

### Quaternary Cover

- Alluvial river gravels, sand or silt
- Alluvial fan deposits
- Active fluvial deposits
- Landslide deposits



Map prepared by Duncan Noble

Map coordinates in New Zealand Transverse Mercator 2000. Reference map sheets are NZTopo50 series.

Basement mapping and unit descriptions modified from Rattenbury et al. (2006). Structural form lines from this study, Bradshaw (1972), Rattenbury et al. (2006) and Forsyth et al. (2008).