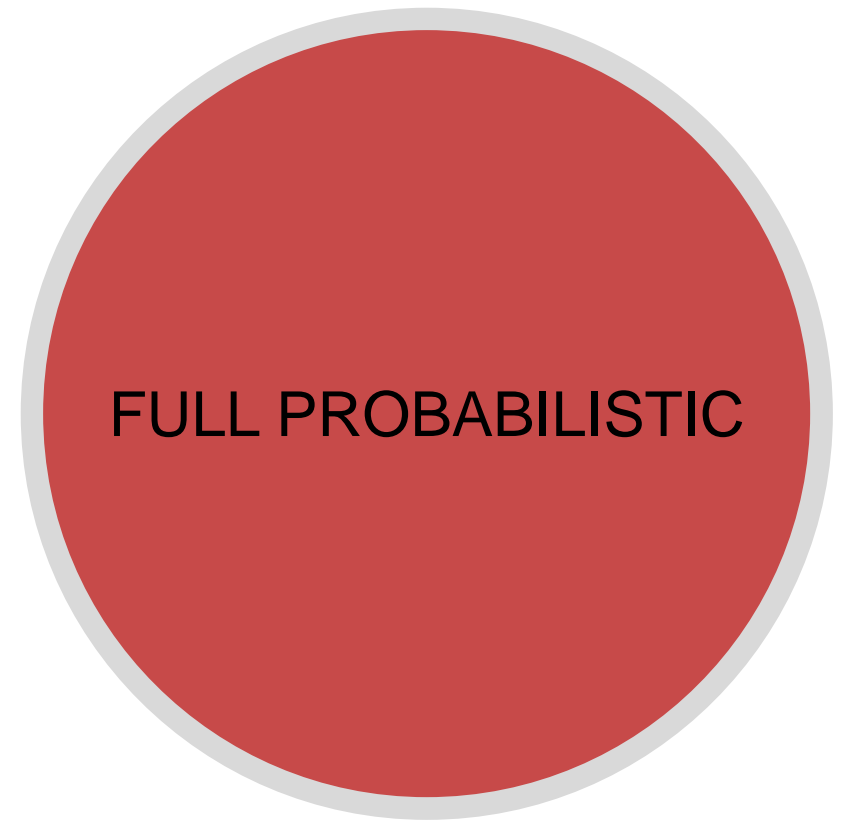
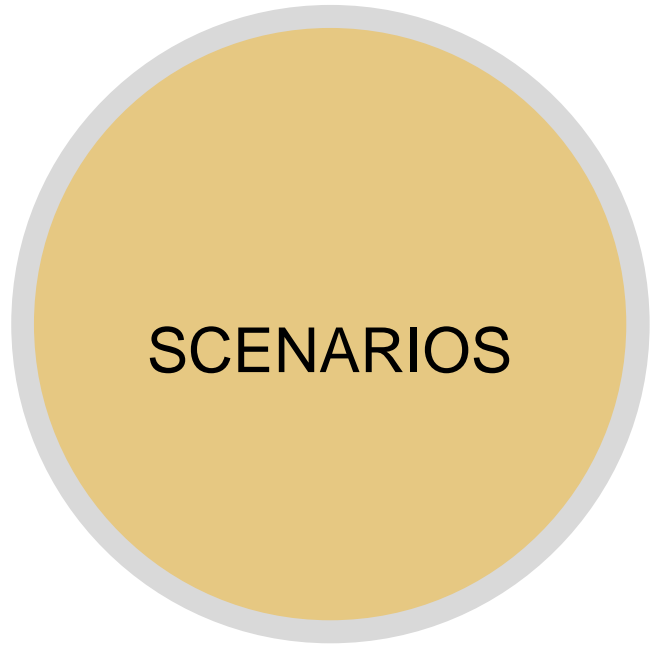
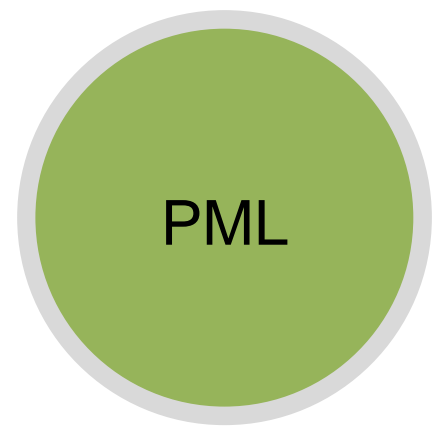
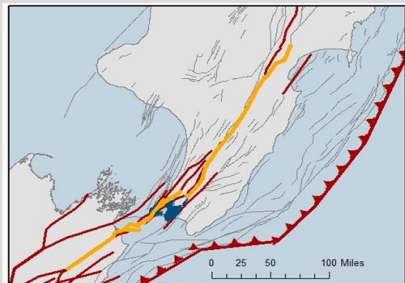


MEASURES OF INSURANCE RISK

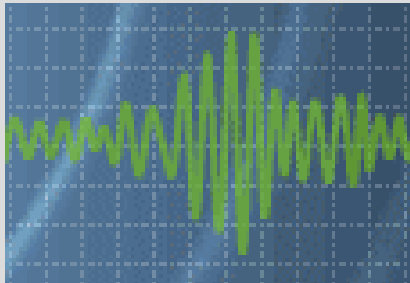
- Probable Maximum Loss (PML)
- Event Scenarios
- Full probabilistic model



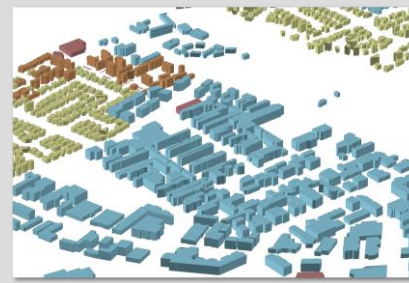
FRAMEWORK FOR EARTHQUAKE RISK MODELING



Define Earthquake Events



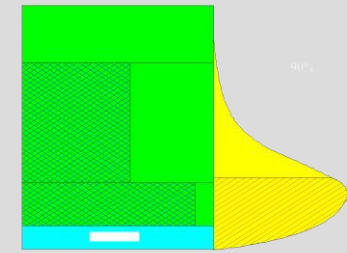
Assess Ground Motion



Apply Exposure



Calculate Damage



Quantify Financial Loss

MODELLED EARTHQUAKE LOSS FREQUENCY-SEVERITY

