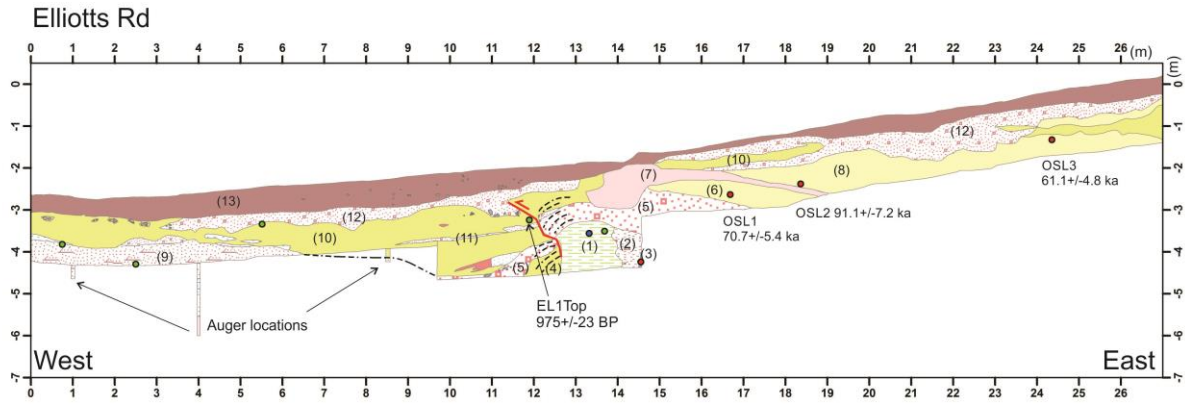


Addendum to thesis

The radiocarbon dates reported in chapter 4 are presented as radiocarbon years BP. They are not reported as calibrated years BP. The following table lists the radiocarbon sample numbers for each trench for future reference.

| Field Code | Waikato lab code | Date (radiocarbon years BP) |
|---------------------------|-------------------------|--|
| <i>Elliotts Rd</i> | | |
| EL1 Top | Wk-41282 | 975+/-23 BP |
| <i>Glews Rd</i> | | |
| Glews 2 | Wk-41284 | 5173+/-24BP |
| Glews 3 | Wk-41285 | 6670+/-20BP |

Furthermore, for future reference the trench logs are presented in this addendum with the OSL and radiocarbon dates added to the log rather than just mentioned in the text. The following two figures therefore correspond to Figure 4.4 (Elliotts Rd) and Figure 4.11 (Glews Rd) respectively but with the dating results included within the figure.



Legend

Lithologies

- | | |
|--------------------------|---|
| A horizon (13) | Loess (8) |
| Cobbly gravel (12) | Coarse gravelly silt (7) |
| Sandy gravel (11) | Loess (6) |
| Loess colluvium (10) | Large cobbly gravel (5) |
| Coarse silty sand (10a) | Loess colluvium (4) |
| Cobbly lens (10b) | Laminated medium sand (3) |
| Fine gravelly silt (10c) | Pebbly gravel (vertically stratified) (2) |
| Silty fine gravel (10d) | Organic clay (1) |
| Organic silt deposit (9) | |

Sampling/Dating locations

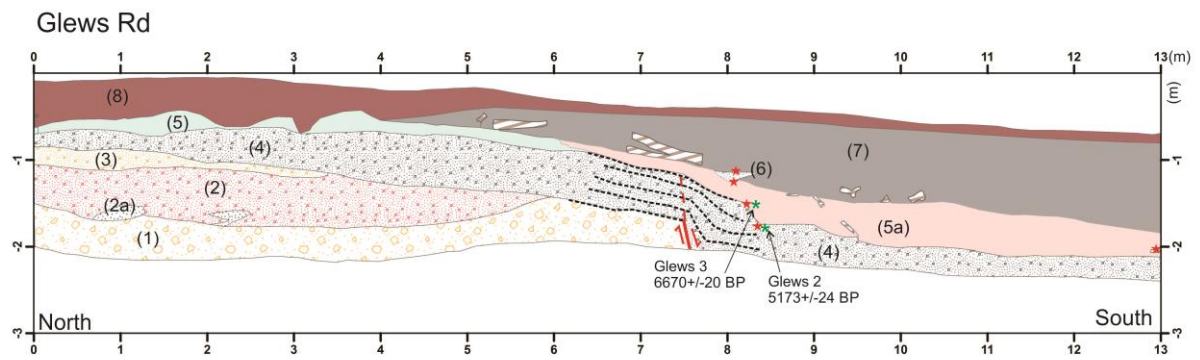
- OSL
- Radiocarbon
- SEM

Fault zone

- rollover laminations
- inferred fault and slip-sense indicator

Auger profile

- Organic silt
- Gravelly silt (angular clasts, fining upwards)
- Gravelly mottled clay



Legend

Lithology

- | | |
|--------------------------------------|---|
| A horizon (8) | Stratified pebbly sandy gravel (3) |
| Peat (7) | Stratified sandy cobbly gravel (2) |
| Gravel lens colluvial wedge (6) | Sand lenses (slightly cross-bedded) (2a) |
| Clayey silt (5) | Large cobbly sandy gravel (clast supported) (1) |
| Organic clay (5a) | Wood |
| Sandy pebbly gravel (imbricated) (4) | Radiocarbon sample locations |

Fault zone

- rollover laminations
- inferred fault and slip-sense indicator

Dated radiocarbon samples