

1 **Relative roles of genetic variation and phenotypic plasticity in the invasion of**
2 **monkeyflower *Erythranthe gutatta* in New Zealand**

3
4
5 Michelle Williamson¹, Daniel Gerhard², Philip Hulme^{3,4}, Hazel Chapman^{5*}

6
7 ¹ Institute of Environmental Science and Research ESR Christchurch, Canterbury, New
8 Zealand

9 ² School of Maths and Stats, University of Canterbury,,PB 4800 Christchurch, New Zealand

10 ³ Department of Pest Management and Conservation, Lincoln University, P.O. Box 85084,
11 Lincoln 7647, New Zealand

12 ⁴ Bioprotection Aotearoa, Lincoln University, P.O. Box 85084, Lincoln 7647, New Zealand
13 ORCID 0000-0001-5712-0474

14 ⁵ School of Biological Sciences, University of Canterbury, PB 4800, Christchurch New
15 Zealand ORCID 0000-0001-8509-703X

16 * hazel.chapman@canterbury.ac.nz

17
18
19 **Abstract**

20 Evolutionary processes which increase the probability of an introduced plant species
21 becoming invasive include high levels of genetic diversity and phenotypic plasticity.
22 Naturalised in New Zealand, monkeyflower, (*Erythranthe gutatta*), a clonally spreading
23 herb of waterways and seepage areas native to the Western USA, shows marked variation in a
24 range of vegetative, reproductive and inflorescence traits. We used two common gardens
25 differing in elevation to explore the relative contribution of genetic versus plastic variation
26 within nine traits among 34 monkeyflower clones from across the New Zealand South Island.
27 We looked for evidence of clinal variation across elevation gradients and for home site
28 advantage. We found both high genetic diversity and trait plasticity explain the observed
29 variation, although less evidence for adaptive plasticity. Most genetic variation was observed
30 in the lowland garden (9m a.s.l.), where the overall trend was for above ground dry weight to

31 be lower, and horizontal shoot length greater, than at the montane garden (560m a.s.l). We
32 found no evidence of local adaptation to any of the measured environmental variables.
33 However, we observed a pattern of higher biomass and higher plasticity at lower versus
34 higher elevations and in clones originating from lower elevation sites.

35

36

37 **Key Words** Phenotypic plasticity, common garden, elevational gradient, *Mimulus guttatus*,
38 rapid evolution

39

40 **Acknowledgments**

41 The study was funded through grants from the Koiata Botanical Trust with MW receiving a
42 Roland Stead Postgraduate Scholarship and a Laura J Clad Memorial Scholarship.

43 Many thanks to Dave Conder for maintaining the Ilam garden and to Aaron Millar for field
44 work support.

45 INTRODUCTION

46 Invasive alien plants often show considerable phenotypic variation in their introduced range,
47 explained by local adaptation, phenotypic plasticity (whereby plants are able to adjust their
48 phenotype according to the local environment (Pigliucci et al. 1995; Geng et al. 2007;
49 Pitchancourt and Van Klinken 2012) or a combination of both (Moroney et al. 2013; Si et al.
50 2014). However, despite a plethora of studies (Geng et al. 2016; Hiatt and Flory, 2020;
51 Fakhr et al. 2022;), the relative contribution of genes and the environment to such variation
52 remains poorly understood (Vanwallendael et al., 2018; Villellas et al. 2021; Yuan et al.
53 2022). While the success of clonally reproducing invasive species is often attributed to
54 plasticity (Loomis and Fishman 2009; Riis et al. 2010; Keser et al. 2014), quantitative links
55 between plasticity and fitness are rare (Liu et al. 2016; Bufford and Hulme 2021a). Plastic
56 traits can be neutral or even mal-adaptive, a consequence of genetic correlation or trade-offs
57 (van Kleunen and Fischer 2004) and so evidence of plasticity does not necessarily equate to
58 increased fitness. Of course, adaptation can play an important role in invasion success, even
59 in clonal plants (Geng et al. 2016).

60 Given that understanding why some species become invasive but others don't is one of the
61 main focal areas of invasion biology (Moloney et al. 2009) this facet of invasion success
62 warrants further investigation (Ghalambor et al. 2007; Geng et al. 2016; Lee-Yaw et al. 2019;
63 Enders et al. 2020). It is especially relevant for clonal ornamental plants given their under-
64 representation in the literature and the predicted global increase in garden escapes with
65 climate change (van Kleunen et al. 2018; Hulme 2020). Many ornamentals reproduce easily,
66 often with a strong clonal component to reproduction and are predicted to be the major pool
67 of future invasive species worldwide (van Kleunen et al. 2018).

68 Local adaptation allows for invasive success (Lee et al. 2002; Leimu and Fischer 2008;
69 Colautti and Lau 2015 ; Molina-Montenegro et al. 2018; Lee-Yaw et al. 2019) by conferring
70 genotypes with a 'home site advantage' (Kawecki and Ebert 2004; Maron et al. 2004; Allan

71 and Pannell 2011; Bennington et al. 2012), whereby plants grown in their home environment
72 are more fit than plants from elsewhere (but see Lee-Yaw et al. 2019). In contrast
73 phenotypic plasticity allows the same genotype to thrive in a range of environments
74 (Bossdorf et al. 2005; Richards et al. 2006; Hulme 2007; Moloney et al. 2009, ; Bufford and
75 Hulme 2021a; but see Palacio-Lopez and Gianoli 2011). As with local adaptation, plasticity
76 may evolve post introduction (Lande 2015). Demonstrating the relative contribution of each
77 evolutionary strategy is difficult for a number of reasons (Noble et al. 2019; Vilellas et al.
78 2021) and findings have to date been equivocal (Bossdorf et al. 2005; Richards 2006; Hulme
79 2007; Bock et al. 2015).

80 One approach to untangle the different components (genetic versus plastic) of intra- specific
81 phenotypic variation is to use common garden experiments, where clones from a number of
82 environmentally different populations are grown together under as near -identical conditions
83 as possible (Allan and Pennell 2009; Cheplick 2015; Vilellas et al. 2021). If, under the
84 same environmental conditions clones maintain their home site phenotypes, this variation is
85 deemed genetic (Turesson 1922; Nunez-Farfan and Schlichting 2001). In contrast, if under
86 the same conditions the clones from different locations exhibit similar phenotypes the
87 variation is considered plastic. Comparing trait values within and among clones, analysis of
88 variance allocates the proportion of variance within clones into genetic and plastic
89 components. In invasion ecology common garden experiments have been used to compare
90 provenances from native and introduced ranges in the introduced range (Bufford and Hulme
91 2021a; b; Colautti and Barrett 2009 and references within), alien provenances from just the
92 introduced range (Kollmann and Baneulos 2004; Rapson and Willson 1992; Colautti and
93 Barrett 2013; Monty and Mahy 2009) and provenances in both the native and introduced
94 range (Maron et al. 2004; Flory et al. 2011; Shelby et al. 2016; Berend et al. 2019; Oduor et
95 al. 2016 and references therein). However, often such experiments have been compromised
96 by their design. For example, too few gardens or gardens with very similar environments

97 (Moloney et al. 2009; Villelas et al. 2021). Moreover, well designed experiments have
98 shown that contradictory results in different gardens are to be expected and help to untangle
99 genetic versus environmental influences (Maron et al. 2004; Williams et al. 2008; Moloney et
100 al. 2009; Florey 2011; Villelas et al. 2021).

101 We investigate the relative contribution of genotype versus plasticity to the widespread
102 success in New Zealand of the introduced *Erythranthe gutatta* (D.C.) G. L. Nelson,
103 (section *Simiolus*, Phrymaceae), previously known as *Mimulus gutattus* D.C. Lowry et al.
104 (2019), and commonly referred to as monkeyflower. Due to its wide range of life histories
105 and environmental tolerance, and its propensity for whole genome duplication, *E. gutatta* has
106 become a model species in evolutionary ecology and invasion biology (Wu et al. 2008;
107 Friedman et al. 2015; Da Re et al. 2020). *E. gutatta* is a widespread, common and rapidly
108 spreading clonally reproducing weed in New Zealand and is of considerable interest because
109 it shows a marked niche-shift, occupying habitats in New Zealand which lie outside of the
110 environmental conditions found in its native range (Da Re et al. 2020). One explanation for
111 this lack of niche conservatism is that different genotypes (different source populations)
112 respond differently to different environments. Alternatively, the niche-shift may reflect post-
113 introduction evolution, either of plasticity or by local adaptation (Da Re et al. 2020). While
114 New Zealand *E. gutatta* populations undoubtedly represent bottlenecked populations and,
115 according to (Vallejo-Marin et al. (2021) historical, rather than recent introductions, they do
116 include both native US and bridgehead UK populations, which suggests the potential for
117 novel genetic combinations in New Zealand. How likely this is remains speculative given the
118 primarily clonal nature of *E. gutatta* spread.

119 We undertook a set of common garden experiments to distinguish the extent to which the
120 considerably phenotypic variation observed in *E. gutatta* in New Zealand reflects plasticity
121 versus contemporary evolution leading to local adaptation. The selection pressure we
122 considered most likely to impact plants from across our sampled sites was elevation,

123 incorporating a steep cline in temperature and rainfall. We thus chose our two common
124 gardens based on elevation; Ilam (hereafter referred to as the lowland site) and Cass
125 (hereafter referred to as the montane site), at 9 m and 580 m respectively, to expose any GxE
126 effect (different genotypes responding differently to the two environments). Given that our
127 sites spanned the entire length of the South Island, we also looked for evidence of a
128 latitudinal cline in biomass. Our specific hypotheses were that 1) we would detect clinal
129 variation associated with elevation, so that clones from montane populations would be fittest
130 in the montane garden and vice versa. 2) We would detect home site advantage, such that the
131 Cass clone grown in the Cass garden would be the fittest clone in the montane garden and
132 similarly, clones from close to the lowland Ilam garden would be the fittest clones in the
133 lowland garden.

134

135

136 **Methods**

137 **Study species**

138 *Erythranthe gutatta* (D.C.) G. L. Nelson, is the most common species in a large *Mimulus*
139 species complex (Ritland and Ritland 1989). Widespread across the Western US (Friedman et
140 al. 2015; Demarche et al. 2016), *E. gutatta* has become naturalised across Europe and in New
141 Zealand. First recorded in New Zealand in 1878 (Webb et al. 1988), Vallejo-Marin et al.
142 (2021) found that New Zealand populations have been introduced multiple times both
143 directly from native Alaska and by way of a bridgehead from the UK.

144

145 **Experimental design**

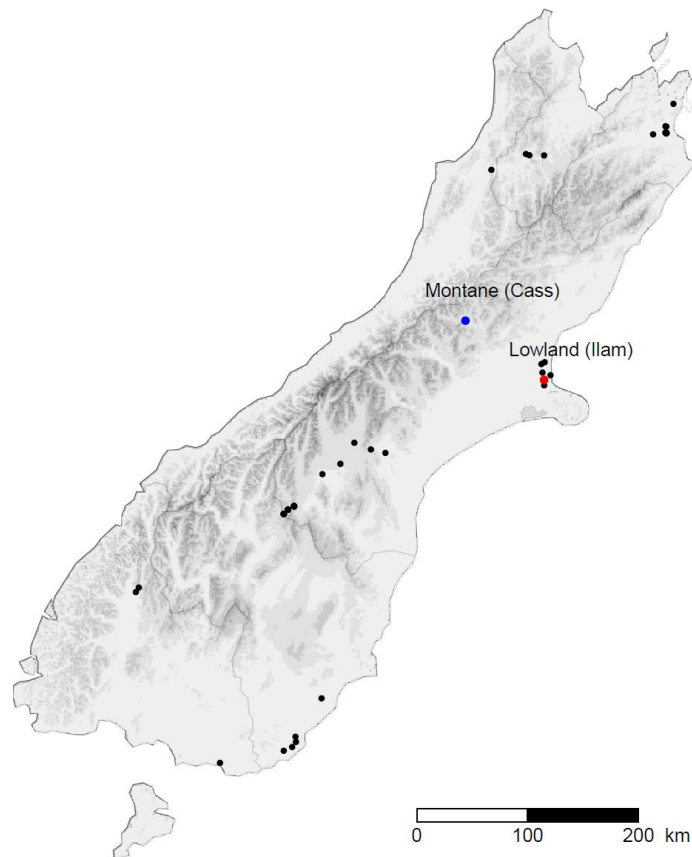
146 We sampled a single clone from each of 34 distinct locations across the South Island of New
147 Zealand. Locations were never less than 10 km apart and were chosen to be representative of

148 environmental and altitudinal variation across the South Island and included seven
149 geographically isolated regions (Fig 1).

150

151 **Fig 1** Sample locations of *E. gutatta* across the New Zealand South Island
152 (<https://www.stats.govt.nz>). The sites are clustered according to geographical region.

153



154

155

156

157

158

159

160

161

162 At each sampling site we recorded 16 environmental variables and calculated the annual

163 average temperature, growing season average temperature, average minimum and maximum

164 temperature, extreme minimum and maximum temperature, annual average rainfall, humidity

165 and precipitation from data collected from local climate stations between 1971 and 2000 (Table
 166 S 1). Populations were mostly small patches along stream sides or drainage ditches and we
 167 collected stems of *E. gutatta* with basal runners from a single clone from each location. From
 168 each clone we propagated twelve replicates from small internode cuttings. To reduce clonal
 169 environmental effects as much as possible, cuttings were <2cm long and were in similar
 170 developmental and physiological condition (Libby 1962; Weiner et al. 1997). Cuttings were
 171 planted in separate 10 X 10 X 10 cm³ pots filled with potting mix. Pots were placed on tables
 172 in a glasshouse, with their distribution on the tables randomized weekly. Early in the 2018
 173 growing season cuttings were translocated into individual pots (7.5L, 20.5 cm wide x 25.5 cm
 174 diameter), lined with plastic bags and filled with a slow release fertiliser potting mix. The pots
 175 were moved into the two common gardens. Half (six replicates per clone) went into the
 176 lowland garden on the University of Canterbury Ilam campus (43°31'S 172°35'E and the
 177 remainder were set up at a montane garden located at the University of Canterbury Cass field
 178 station (43°02'S, 171°45'E). The montane garden was significantly cooler and wetter than the
 179 lowland garden (Table 1).

180 **Table 1** Environmental measures of Ilam, Christchurch and the Cass Field Station. Averages 1971-
 181 2000

Location	Elevation (m)	Annual Average Temperature (°C)	Average Temperature (°C)	Average Min Temperature(°C)	Extreme Min Temperature(°C)	Average Max Temperature(°C)	Extreme Max Temperature(°C)	Annual Average Rainfall (mm)	Humidity (%)	Precipitation (mm)	Max Sunlight Hours	Min Sunlight Hours
Ilam, Christchurch	9.69	12.29	14.7	9.63	0.62	19.76	32.5	131.3	75.3	10.10	15.25	8.27
Cass Field Station	578.81	8.22	10.72	4.17	-5.3	17.27	30.06	2289.6	84	192.6	15.22	9

182

183 Plants were randomly assigned positions in each common garden and their distributions
184 randomized weekly. *E. gutatta* occurs primarily in wetlands and riparian areas and thus plants
185 were kept moist with daily automatic watering to limit any effect of drought or precipitation
186 on performance.

187

188 **Performance traits**

189 We chose nine quantitative traits which have previously been shown to exhibit marked inter-
190 population variation in *E. gutatta* (eg Hall 2006; van Kleunen and Fischer 2008). We counted
191 the maximum number of buds on each plant. In mid-April, towards the end of growing season,
192 we measured the vegetative, reproductive and flower traits in both gardens: mean length and
193 width of the largest two leaves, length of the longest horizontal shoot and length between the
194 second and third internodes, the largest flower length, depth and width. All plants were then
195 harvested towards the very end of the growing season in mid-April and dry weight of above
196 ground tissue was measured after drying at 80°C for 72 h. We chose above ground dry weight
197 as our proxy for fitness.

198

199 **Statistical analysis**

200 To estimate the total genetic and environmental components of the variation in vegetative,
201 reproductive and flower traits among clones, and their genotype x environment (GxE)
202 interactions, we used linear mixed-effects models. In the models, each of the quantitative traits
203 were analysed separately, using a logarithmic transformation on each observation after visually
204 inspecting model diagnostics. For the GxE investigation for each response, the expected
205 population effect of the two common garden locations was estimated together with two
206 variance components, quantifying the site-specific variability in the montane garden and the
207 site-specific variability of the garden location effect (ie lowland – montane). This last term in
208 the model allows us to predict the relative garden performance for each clone compared to the

209 population average. Posterior variance estimates were used to construct 95% confidence
210 intervals for individual random effect predictions. We plotted reaction norms (Schlichting and
211 Pigliucci 1998) of each clone for each of the nine traits to illustrate how the phenotypes of the
212 different genotypes expressed in each of the two gardens.

213 To visualise the trait differences among the 34 clones and to observe how the same clonal
214 replicates responded in each of the lowland and montane common gardens, we ran a principal
215 component analysis (PCA). Based on the covariance between traits, the scaled and centred
216 clone predictions were summarised in a biplot of the first two principal components. We treated
217 all predictions as new observations, ignoring any further estimation uncertainty. To test for
218 association between all measured traits and elevation we plotted principal component scores
219 vs elevation. We plotted principal component scores vs all environmental variables to test for
220 association between all measured traits and all environmental site environmental variables
221 (Table S1). All statistical analyses were performed using the open-source program R, version
222 4.0.5 (R Core Team 2018) and package lme4 (Bates et al. 2015).

223

224 **RESULTS**

225

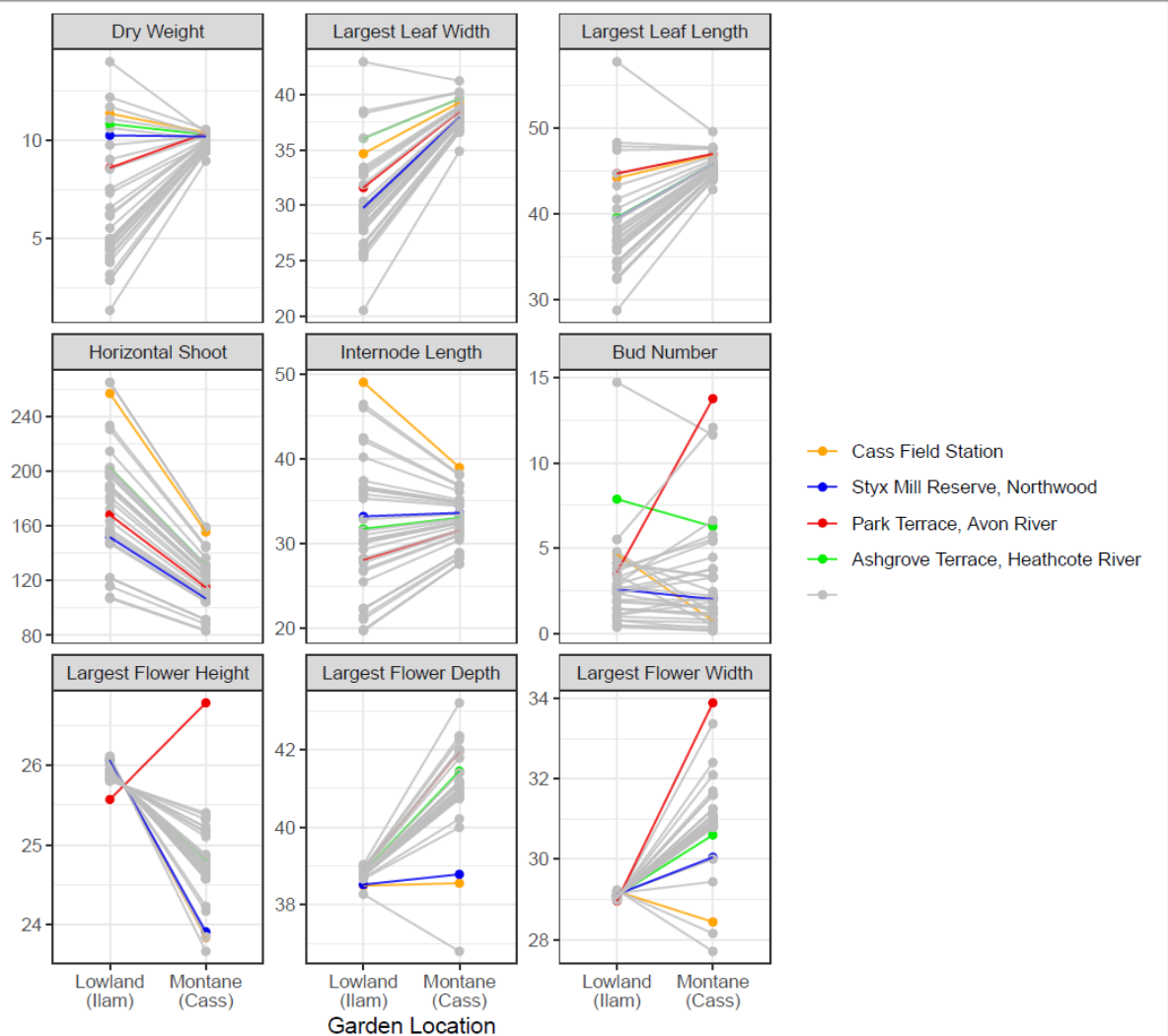
226 *Phenotypic variation*

227 All plants survived in both common gardens and we found considerable variation in all
228 measured traits across the two gardens. In the lowland garden the mean dry weight of the largest
229 clone was almost 20 times that of the smallest, with measures of leaf size varying by more than
230 a twofold difference. As result, there were clear morphotypes; while the majority of plants were
231 somewhat intermediate, individual clones ranged from short, horizontally spreading plants to
232 tall, multi-stemmed and multi flowered individuals. In contrast in the montane garden,
233 vegetative traits among clones were markedly less variable and it was more difficult to
234 recognise morphotypes among the clones. However, in the montane garden flower size varied
235 among clones more than in the lowland garden (Fig. 2). The reaction norms of all clones,
10

236 except from Park Terrace, Christchurch, responded in a similar way to the environments in the
237 lowland and montane common gardens (Fig. 2).

238 The first two axes of the PCA together explained 66% of the total variation (Fig 3). Axis 1
239 (38%) correlated most strongly with the following vegetative traits: above ground dry weight,
240 leaf size (length and width), internode length and stolon length. The second axis (28%)
241 correlated most strongly with florescence traits such as flower width and depth. Most variation
242 among clones in the lowland garden was along axis 1, and in the montane garden along axis 2.

243 **Fig 2** Reaction norms of single genotypes - predictions of expected trait variables by clone.
244 Lines connect the predictions for the same genotype at the two different gardens. All
245 predictions are presented on the original scale of each measurement.

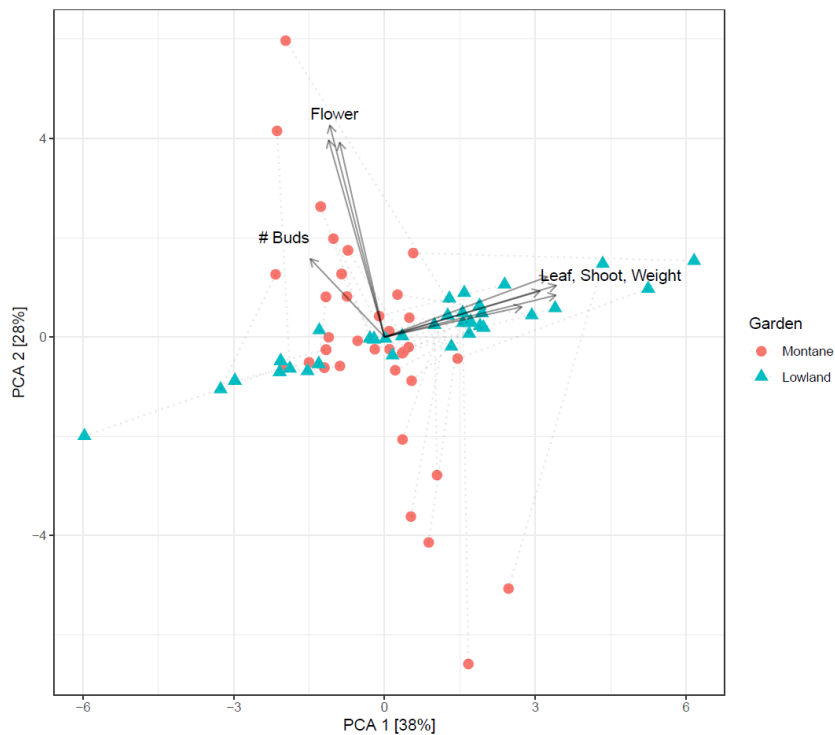


246

247

248

249 **Fig 3** Biplot of the first two principal components, summarising all traits (arrows indicating the rotated
250 coordinate system) for each population-specific prediction. The (0,0) coordinate represents the
251 population average for all traits



252
253
254

255 All clones show plasticity with variance-changing $G \times E$, and we found marked variation
256 among clones in the degree of plasticity exhibited. For example, two clones from lowland
257 populations in Christchurch showed marked differences in their reaction norms for plant dry
258 weight: the Styx Mill clone showed no shift between elevations while the Park Terrace clone
259 a marked decline in the montane garden (Figure 2). The direction of plasticity also differed
260 among clones, for example despite being collected in the same region and elevation the Styx
261 Mill clone showed a marked decline flower length with elevation while the Park Terrace clone
262 a marked increase in the montane garden. However, while plasticity is common among clones,
263 the rank order of clones remained the same for most traits, except for, the number of buds and
264 flower length where the reaction norm of the Park Terrace was inconsistent with the remaining
265 clones.

266 Evidence for home site advantage would be apparent if the clone from Cass outperformed all
267 other clones in the montane garden and performed less well relative to lowland clones in the
268 lowland garden. This was generally not the case, within the montane garden the Cass clone is
269 within the top few clones in terms of vegetative traits but is outperformed by several lowland
270 clones. It maintains its relatively high ranking in many traits in the lowland garden. Similarly,
12

271 there was no evidence at all for the lowland Christchurch sites in the lowland garden
 272 outperforming clones from other locales (Fig. 2).

273

274 *Genetic versus plastic components to variation*

275 The GLMM analysis to determine total genetic, environmental (residual) and GxE components
 276 of the variation in vegetative and reproductive traits among clones revealed that in the lowland
 277 garden clone (genotype) explained 33%-45% of the variance in vegetative traits and almost
 278 none of the variation in inflorescence traits (Table 2). In contrast in the montane garden it was
 279 the inflorescence traits (corolla depth and width and bud number) and stolon length which
 280 showed most genetic variability among clones.

281

282 **Table 2** Estimates for site-specific variances by garden location and residual variances together with
 283 proportions of explained variance by population [95% confidence intervals]. All estimates are based on
 284 logarithmic transformed scales. The total variance among the 34 clones in the Lowland and
 285 Montane garden is presented for each measured trait, The residual is the total variance in each
 286 measured trait among the 34 clones not explained by garden. The GxE component for each
 287 garden is the percentage of variance for each measured trait within each garden

Trait	σ^2 Montane	σ^2 Lowland	σ^2 Residual	GxE Montane	GxE Lowland
Dry Weight	0.01	0.80	0.99	0.01 [0.00; 0.16]	0.45 [0.30; 0.58]
Flower Length	0.01	0.00	0.05	0.10 [0.00; 0.45]	0.00 [0.00; 0.29]
Flower Depth	0.01	0.00	0.02	0.21 [0.00; 0.55]	0.00 [0.00; 0.28]
Flower Width	0.01	0.00	0.04	0.19 [0.00; 0.53]	0.00 [0.00; 0.28]
Leaf Width	0.00	0.06	0.08	0.04 [0.00; 0.20]	0.44 [0.28; 0.57]
Leaf Length	0.00	0.05	0.07	0.03 [0.00; 0.15]	0.41 [0.25; 0.54]
Horizontal Shoot	0.06	0.13	0.24	0.21 [0.06; 0.40]	0.34 [0.20; 0.48]
Internode Length	0.02	0.13	0.28	0.07 [0.00; 0.23]	0.33 [0.18; 0.46]

288

289

290

291

292

293

294

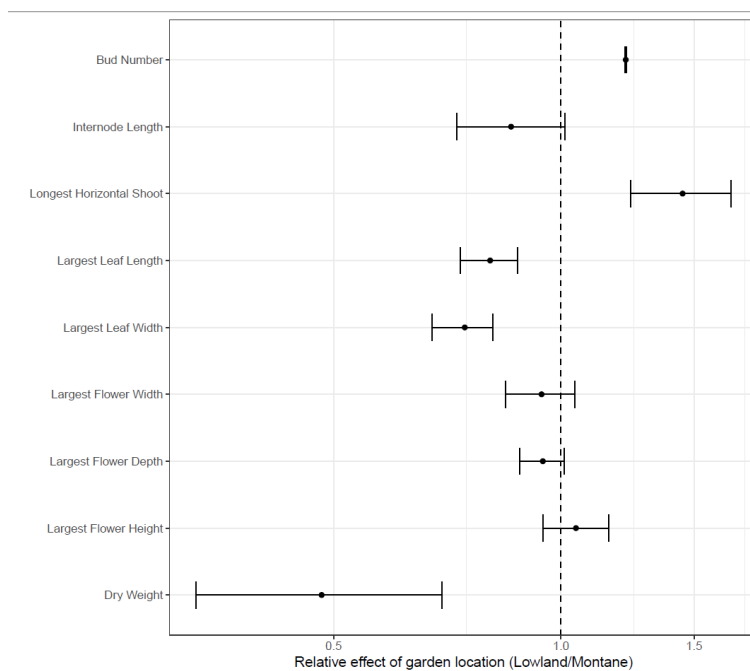
295 *Plastic variation*

296 For all of the measured traits except for stolon length and number of buds, the environmental
297 effect of garden was greatest in the montane garden, where almost all of the clones have higher
298 above-ground dry weight, greater leaf areas and longer internode lengths than in the lowland
299 garden (Fig. 4). This environmental component is large, ranging from ~ 20 to 50% difference
300 between gardens, depending on trait.

301

302 **Fig 4** Estimated relative effect of garden location Lowland/Montane and 95% confidence intervals. An
303 estimate of 1 indicates the same expected response at both garden locations, Estimates > 1 correspond
304 to a larger average response in the lowland compared to the montane garden and estimates of <1 indicate
305 a greater average response in the montane, compared to the lowland garden.

306



307

308

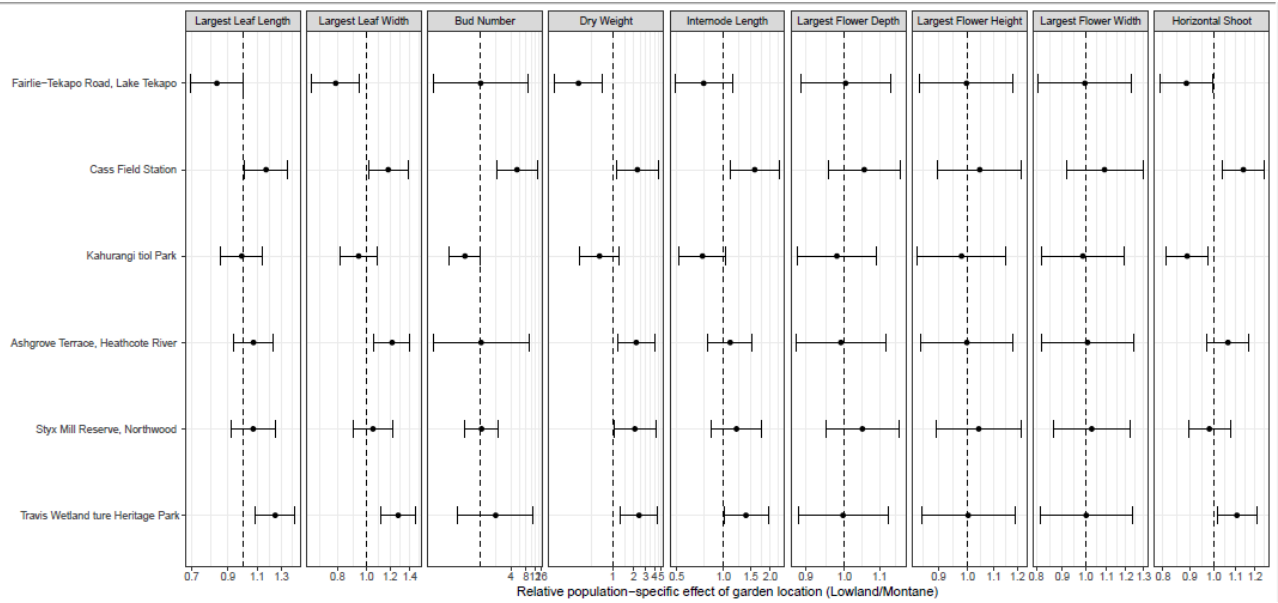
309 The importance of an environmental component to variance is also illustrated by the patterns
310 for a selection of individual clones (Fig. 5, the individual response of each trait in all clones to
311 the two garden environments is presented in Fig 1 Supplementary Information). For example,
312 the clone originating from the montane (Cass) garden site showed one of the strongest and most
313 consistent plastic responses across all traits when moved to the lowland garden, producing

314 longer horizontal shoots and internodes, and more flowers than in its home montane
315 environment (Fig. 5). In contrast, the clones from the lowland Travis Wetland and Ashgrove
316 Terrace sites close to the lowland common garden showed a similar, if less pronounced
317 response to the two garden environments (Fig 5). In the lowland environment stolon length is
318 markedly longer relative to the montane garden in all clones, although the degree of between-
319 garden differences (plasticity) varies among clones. In contrast to the other traits, number of
320 buds are fairly similar in both gardens for most clones, although where there are plastic
321 response these vary in direction among clones. A few clones e.g., Ashgrove Terrace clone, do
322 show a strong environmental response (Fig 5). As expected, we found far more within-clone
323 variation in vegetative and reproductive (length of horizontal shoot and bud number) than floral
324 traits.

325

326 **Fig 5** Predicted clone-specific relative effects of garden location Lowland/Montane and 95%
327 confidence intervals. Clones are ordered from highest (990m) to lowest (0m) elevation of the
328 sampling location. A value of 1 indicates the same expected population average at both
329 locations, Estimates > 1 correspond to a larger average response for a clone in the lowland
330 garden compared to montane garden.

331

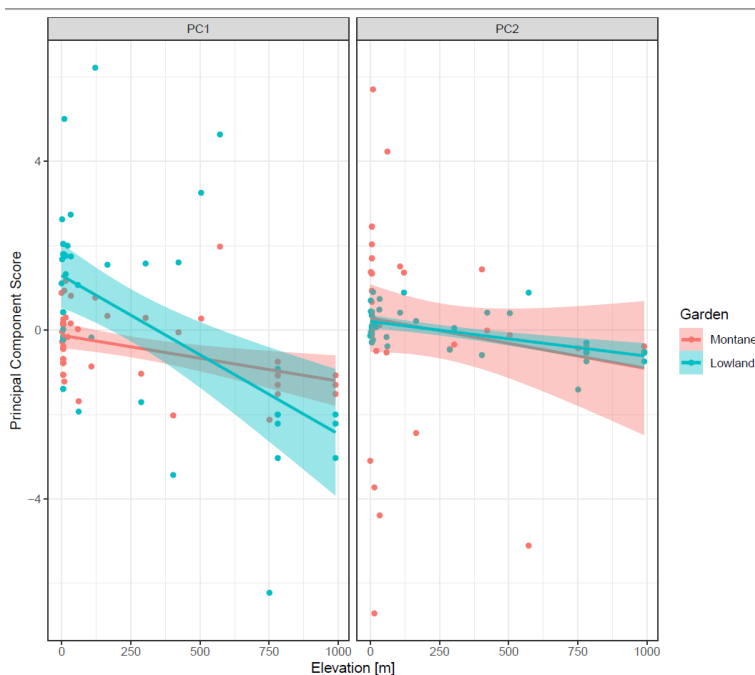


332

333 *Evidence for adaptation*

334 When the PC scores were plotted against each of the source environmental variables
 335 independently, for each clone in each of the lowland and montane garden, elevation
 336 explained some of the variation in vegetative traits. This was most obvious in the clones
 337 growing in the lowland garden, where the clones from lower elevation source sites were
 338 overall markedly larger in comparison to clones from higher elevation source sites (Fig 6).

339 **Fig 6** Dependency between Principal Component scores and elevation of sample locations
 340 separate for the two garden locations. The predictions of a linear regression model are added.



341

342

343 Clones from lower elevation sites were more plastic than those from higher elevations (Fig. 7).

344 This influence of source elevation on individual clone responses to garden locations is most

345 obvious for above ground dry weight, stolon length and internode length. In contrast, elevation

346 at source location had no marked effect on relative garden response in bud number or flower

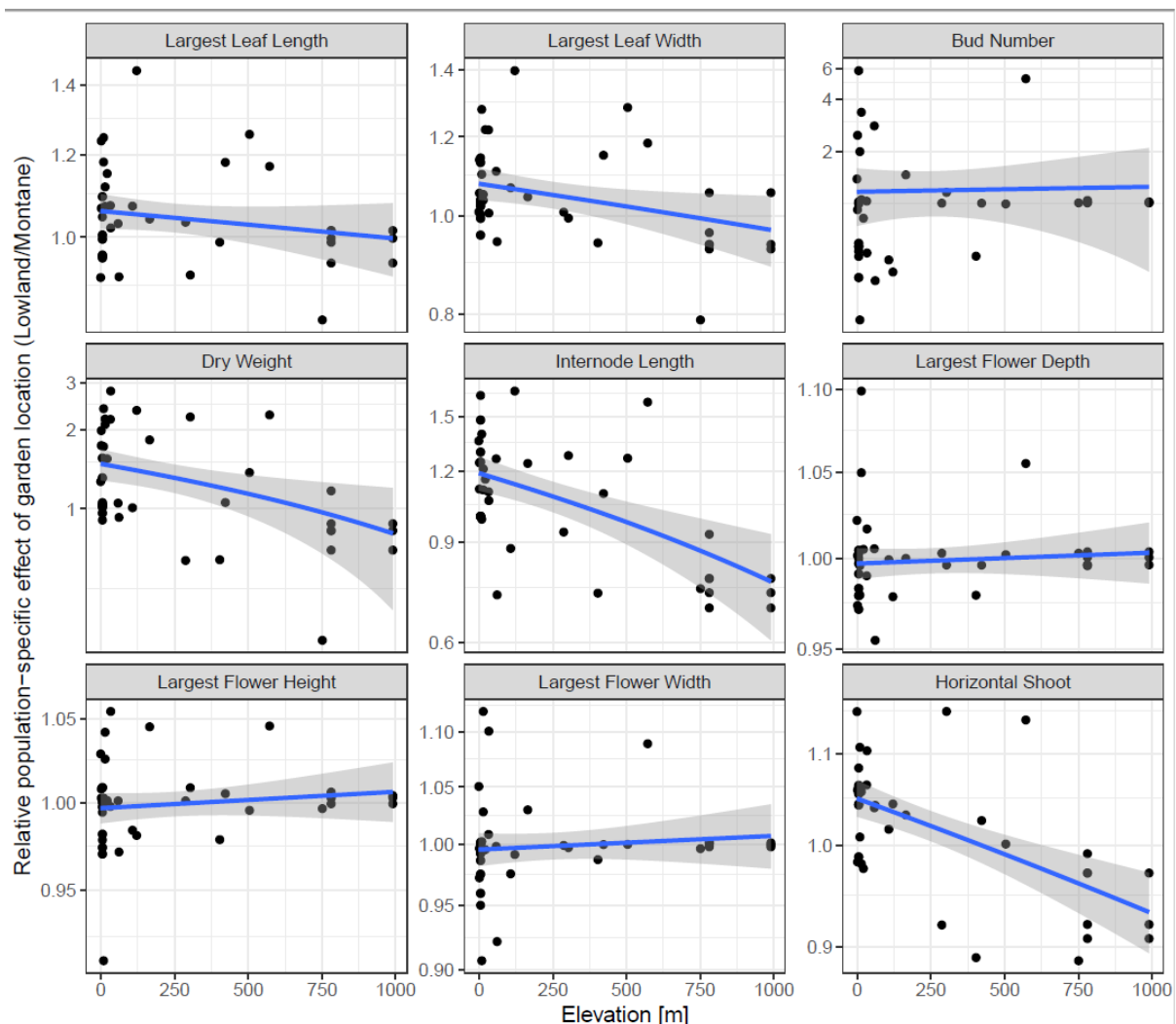
347 characteristics (Figure 7).

348

349 **Fig 7** Dependency between the relative clone-specific effect of garden locations and elevation

350 of sample location. The predictions of a (log)-linear model for each of the measured variables

351 is added.



352

353

354

355 DISCUSSION

356 The aim of our study was to describe some of the phenotypic variation in *E. gutatta* clones
357 from across New Zealand and to partition this variation into genetic and plastic components.
358 We hoped to untangle the relative importance of genetic versus plastic effects in the success
359 of *E. gutatta* as an invasive clonal plant, something which might shed light on its modelled
360 niche shift in New Zealand (Da Re et al. 2021). Specifically we tested hypotheses of
361 adaptation to elevation and home-site advantage. While we acknowledge that one clone per
362 site excludes any measure of intra-population variation, we are confident that most sites
363 comprised one or a very few clones.

364

365 *Phenotypic variation*

366 Results from our common garden experiment showed that as expected, there were both
367 genetic and environmental components to the variance in all traits measured. However,
368 sorting out the relative contribution of each component and answers about local adaptation
369 became possible only because we used two common gardens and ensured that these gardens
370 were located towards each of the two elevational extremes of source populations (Allan and
371 Pennall 2009; Scheepens et al. 2010; Berend et al. 2019;). We found markedly different
372 results between gardens; in the lowland garden a major proportion of variation in the five
373 measured vegetative traits (above ground dry weight, leaf width, leaf length, horizontal shoot
374 length and internode length) was explained by genetic differences among the clones, while in
375 the montane garden variation in above ground dry weight, leaf width and leaf length was
376 almost entirely masked by plastic responses. In contrast, among-clone genetic differences in
377 flower traits was visible in the montane garden, but hidden in the lowland garden. However,
378 caution is necessary here as conclusions may depend on which fitness measures are used
379 (Villegas et al. 2021). Moreover, plastic responses, some passive and non-adaptive (Liu et al.

380 2016) especially in vegetative traits, may mask genetic traits under favourable conditions
381 (Villellas et al. 2021).
382 Previous studies using common garden experiments to explore variation within introduced
383 species in their new range (Williams et al. 2008; Flory et al. 2011), or to investigate home site
384 advantage (Allan and Pennal 2009) have also found marked differences in trait expression
385 among gardens. The more similar the garden environment to the native range, or home site, the
386 better adapted and therefore fitter the plants should theoretically be. We found limited support
387 for a home-site advantage, with plants collected in the environs of each common garden not
388 beings consistently superior to clones from other locations.

389

390 *Genotypic variation*

391 In the lowland garden, plants ranged from tall, multiple stemmed, large-leaved individuals with
392 abundant flowers through to low growing clones with long horizontal shoots to small
393 individuals with few flowers. Our model predicts that up to 45% of the variance in plant dry
394 weight and 34 % of the variance in length of horizontal shoots was genetically determined.
395 Taken together, the variance in vegetative, and reproductive traits we observed in the lowland
396 garden suggests that across New Zealand there is extensive genetic variation among *E. gutatta*
397 clones. Results from the montane garden tell a different story; at Cass genetic variation among
398 clones explains only 1% of the variation in dry weight and only 21% of the variation in
399 horizontal shoot length, but more genetic variation in flower traits than was observed in the
400 lowland garden. Basing our understanding on data from the montane garden only would
401 suggest that *E. gutatta* clones across New Zealand show little genetic variation in vegetative
402 traits but some variation in flower traits.

403

404

405 *Fitness differences across environments*

406 Bearing in mind that our proxy for fitness was above ground dry weight, our plots of the PC1
407 scores against source elevation suggest adaptation to elevation; the plot strongly indicated
408 higher biomass in clones from low elevation compared with high elevation source sites in the
409 lowland garden. Numerous studies globally have demonstrated the adaptive strategy of low
410 plant height and low biomass at high elevations (Körner 2003). Moreover Olsson and Agren
411 (2002) and Monty et al. (2009) have demonstrated this adaptation in introduced plant species
412 in the US and Europe respectively. However, while adaptation is a credible explanation for
413 our finding that clones from lowland sites are fitter in the lowland than in the montane
414 garden, alternative explanations such as genetic drift through founder effects (Monty et al.
415 2009; McGoey et al. 2020) cannot be dismissed.

416 The weak signal of advantage in clones from lowland sites in the high elevation Cass garden
417 is in accordance with DeMarche et al. (2016) who found that low elevation *E. gutatta*
418 ecotypes outperformed montane ecotypes in their montane common garden. However, the
419 authors agree their conclusions are tenuous for several reasons, including inappropriate
420 measures of fitness. In our New Zealand study, we did not measure below ground biomass,
421 which may have conferred fitness at higher elevations. Moreover, our results are from one
422 year only so we may have missed inter-annual variation in fitness. Alternatively, it is
423 conceivable that genotypes better adapted to higher elevations in New Zealand have not yet
424 reached high elevations environments.

425

426 *Home site advantage*

427 Despite the wide range of genetic variation among our clones in vegetative traits we found little
428 evidence of local adaptation, instead the ranking of clones in terms of relative trait values stayed
429 the same across most traits in both gardens. While the Cass clone, growing in the Cass montane
430 garden was always in the top few ranking clones for all vegetative and reproductive traits we
431 measured, it was only top in internode length and was outperformed by clones from lowland

432 sites in length of longest horizontal shoots- stolons. Similarly, in the Ilam lowland garden while
433 clones from low elevation sites around Christchurch relatively close to the lowland garden
434 performed relatively well they were outperformed by several clones from other regions.
435 Multiple introductions, small populations and founder effects (McGoey et al.), and possibly
436 conflicting selection pressures (Barrett et al. 2008) may explain this lack of evidence for home
437 site advantage. Strong gene flow among populations (Zhao et al. 2013) seems an unlikely
438 explanation given the clonal nature of the spread of *E. gutatta* (Truscott et al. 2008). Multiple
439 introductions into different catchments and founder effects seem the most likely explanation;
440 frequent removal (sometimes annual) of *E. gutatta* to clear waterways followed by re-
441 introduction through fragments of different provenances could well explain lack of ecotypic
442 variation. While absence of ecotypic variation despite strong genotype variation in invasive
443 species has been reported previously (Lord 1992; Ebeling et al. 2011; Pahl et al. 2013; Herden
444 et al. 2019) there is always the possibility that adaptation is being missed because of
445 inappropriate fitness measures. For example, Lord (1992) points out that while Rapson and
446 Wilson (1992) found no evidence for home site advantage among New Zealand *Agrostis*
447 *capillaris* populations in growth and floral morphology, they did find evidence of local
448 adaption to soil water availability and soil nitrogen and phosphorus. Identifying the key traits
449 is therefore essential (Williams et al. 2008; Bufford and Hulme 2021).

450

451 *Plasticity*

452 All clones showed considerable plasticity in all the traits we measured, which was
453 unsurprising, especially for the vegetative traits given this is a perennial, weedy herb (Bazzaz
454 1996). We found above ground dry weight, our proxy for fitness, was almost universally
455 higher in the montane relative to the lowland garden; dry weight was on average 50% higher
456 across all clones at Cass than at Ilam, with little variance in dry weight among clones at Cass.
457 While this reduced inter-clonal variance in dry weight at montane garden reflected varying

458 steepness of the reaction norm for above ground dry weight among the clones, rank order did
459 not change. Likewise, horizontal shoot length was on average 5% shorter in the montane
460 than in the lowland garden, but with no crossing-over of reaction norms. Consistent reactions
461 norms among clones suggests past adaptation and may be indicative of less potential for local
462 adaptation in new environments than if clones had shown variable reaction norms to different
463 environments (Cheplick 2015). One interpretation of these results therefore is that the
464 montane environment is more similar than lowland Ilam to the environment in the native
465 range of *E. gutatta* populations; plasticity permits clones to maximize their fitness under
466 optimal conditions (Hendry 2016). However, based on the environmental suitability models
467 Da Re et al. (2020), neither the lowland or montane garden are especially suitable areas for *E.*
468 *gutatta*. It may well be that much of the plasticity we observe across most of the traits we
469 measured is passive, a side effect of adaptations or other plastic responses (De Witt et al.
470 1998; Funk 2008; Hulme 2008; Auld et al. 2010; Bufford and Hulme 2021a), limiting
471 species ability to respond to changing environments (Valladares et al. 2014). Bufford and
472 Hulme (2021a) stress the need for future experimental studies linking trait plasticity to fitness
473 along manipulated environmental gradients.

474 The direction of the reaction norm for internode length did vary among clones, with some
475 clones showing longer internode lengths in the montane environment relative to the lowland
476 garden and others shorter. This may indicate adaptive plasticity; certainly foraging behaviour
477 via horizontal and vertical growth as observed in *E. gutatta* should be adaptive by allowing
478 the colonisation of new niches (Clements et al. 2021). van Kleunen and Fischer (2021) tested
479 this hypothesis on the clonally reproducing *Ranunculus reptans* and found genetic variation
480 in plasticity for internode and stolon length, evidence supporting adaptive plasticity. The
481 importance in our study of these results is that they show genetic variation among clones for a
482 plastic trait which may support invasiveness (Clements et al. 2021).

483 Further evidence for adaptive (active) plasticity was found in bud number. For this trait
484 reaction norm slopes crossed in some of the clones, and different clones responded differently
485 to the two gardens. Again, this illustrates the potential for adaptive evolution across our *E.*
486 *gutatta* clones.

487 In contrast to the other traits, the flower length, depth and width showed considerable among
488 clone genetic variation in the montane environment but elicited a similar plastic response to
489 the lowland garden, where flowers from all clones were essentially similar in size. We
490 caution too much interpretation of these results because of low flower numbers, but plasticity
491 of *E. gutatta* flowers has been reported before, a response to drought (Kelly et al. 2008).
492 That clones from lower elevation source sites showed greater plasticity in vegetative traits
493 than clones from high elevation source sites is important. Plasticity is selected for in changing
494 environments (Oostra et al. 2018) and lowland sites may be more varied environments than
495 montane ones, experiencing more fluctuation in nutrient levels and more anthropogenic
496 disturbance. Whatever the reason for this elevational variation the finding is notable because
497 the distribution of plastic traits across species ranges may impact how species respond to new
498 environments and how they affect range shifts (Bufford and Hulme 2021a).

499 *Future work*

500 Our study illustrates the potential opportunity in using *E. gutatta* to further understand the
501 mechanisms of successful plant invasions into new niches. Key to taking this further is
502 experimentation using multiple clones from each population in reciprocal transplants, both
503 within New Zealand and between New Zealand and native US *E. gutatta* populations.
504 Comparing home and away fitness traits and home and away plasticity (Bufford and Hulme
505 2021b), especially in traits associated with clonal spread will be important. Trade-offs (or
506 not) associated with greater horizontal shoot length and *e.g.* flower production and seed set
507 should be explored. To what extent plasticity may be aiding or confounding future adaptation
508 and spread across New Zealand needs further investigation. Future fitness trait measures

509 should include flowering phenology, well known to influence invasion success in plants and
510 physiological traits which may be more closely associated with fitness than the traits included
511 in this study.

512

513 *Conclusions*

514 Our study has shown the presence of considerable genetic variation among *E. gutatta* clones
515 from across the South Island of New Zealand; while we found scant evidence for local
516 adaptation (home site advantage) we found a strong signal for higher fitness in all vegetative
517 traits across both garden environments in clones from lowland, as compared with higher
518 elevation sites. Clones from lowland sites were more plastic relative to clones from higher
519 elevation sites, including two key traits facilitating the spread of clonal plants, horizontal
520 shoot length and internode length. Having variation for plasticity in essential traits such as
521 these suggests that *E. gutatta* is well adapted to move into new environments (Gratani 2014)
522 and that plasticity may contribute substantially to its successful niche expansion within New
523 Zealand as compared with its native range. To what extent this reflects a trade-off or lack
524 thereof with other reproductive traits (Bufford and Hulme 2021b) is a major focus for future
525 investigation.

526

527 Data Availability Statement

528 All data are available on request: hazel.chapman@canterbury.ac.nz

529

530

531

532

533

534 References

- 535 Allan E, Pannell JR (2009) Rapid Divergence in Physiological and Life-History Traits be-
536 tween Northern and Southern Populations of the British Introduced Neo-Species, *Senecio*
537 *squalidus*. *Oikos* 118(7):1053-1061
538
- 539 Bates D, Maechler M, Bolker B, Walker S, (2015) Fitting linear mixed-effects models using
540 lme4. *J Stat Software* 67(1): 1-48
541
- 542 Bennington CC, (2012) Home site advantage in two long-lived arctic plant species: results
543 from two 30-year reciprocal transplant studies. *J Ecol* 100(4): 841-851 10.1111/j.1365-
544 2745.2012.01984.x
545
- 546 Berend K, Haynes K, MacKenzie CMD (2019) Common garden experiments as a dynamic
547 tool for ecological studies of alpine plants and communities in northeastern north America.
548 *Rhodora* 121(987): 174-212
549
- 550 Bock DG, Caseys C, Cousens RD, Hahn MA, Heredia SM, Hübner S, Turner KG, Whitney
551 KD, Rieseberg LH (2015) What we still don't know about invasion genetics. *Mol*
552 *Ecol*, 24(9), 2277– 2297 <https://doi.org/10.1002/9781119072799.ch20>
553
- 554 Bossdorf O, Auge H, Lafuma L, Rogers WE, Siemann E, Prati D (2005) Phenotypic and
555 genetic differentiation between native and introduced plant populations. *Oecologia* 144(1): 1-
556 11 10.1007/s00442-005-0070-z
557
- 558 Bufford JL, Hulme PE (2021a) Increased adaptive phenotypic plasticity in the introduced
559 range in alien weeds under drought and flooding. *Biol Invas* 23(8): 2675-2688
560 10.1007/s10530-021-02532-5
561
- 562 Bufford JL, Hulme PE (2021b) Seed size–number trade-offs are absent in the introduced
563 range for three congeneric plant invaders. *J Ecol* 109(11): 3849-3860 10.1111/1365-
564 2745.13761
565
- 566 Cheplick G. P. 2015 *Approaches to Plant Evolutionary Ecology*
567
- 568 Clements DR, Jones VL (2021) Rapid evolution of invasive weeds under climate change:
569 present evidence and future research needs. *Front Agron* 3 10.3389/fagro.2021.664034
570
- 571 Colautti RI, Barrett SC (2013) Rapid adaptation to climate facilitates range expansion of an
572 invasive plant. *Science* 342(6156): 364-366 10.1126/science.1242121
573
- 574 Colautti RI, Lau JA (2015) Contemporary evolution during invasion: evidence for differentia-
575 tion, natural selection, and local adaptation. *Mol Ecol* 24(9): 1999-2017 10.1111/mec.13162
576
- 577 Colautti RI, Maron JL, Barrett SC (2009) Common garden comparisons of native and intro-
578 duced plant populations: latitudinal clines can obscure evolutionary inferences. *Evol Apps* 2
579 (2): 187-199 10.1111/j.1752-4571.2008.00053.x
580
- 581 Da Re D, Olivares AP, Smith W, Valejo-Marin M (2020) Global analysis of ecological niche
582 conservation and niche shift in exotic populations of monkeyflowers (*Mimulus guttatus*, *M.*
583 *luteus*) and their hybrid (*M. × robertsii*). *Plant Ecol Div* 13(2): 133-146
584 10.1080/17550874.2020.1750721
585

- 586 DeMarche ML, Kay MK, Angert AL (2016) The scale of local adaptation in *Mimulus gutta-*
587 *tus* : comparing life history races, ecotypes, and populations. *New Phyt* 211(1): 345-356
588 10.1111/nph.13971
589
- 590 Dijk, HV, Boundry P, McCombre H, Vernet P (1997) Flowering time in wild beet (*Beta vul-*
591 *garis ssp. maritima*) along a latitudinal cline. *Acta Oecol* 18(1): 47-60 10.1016/s1146-
592 609x(97)80080-x
593
- 594 Ebeling SK, Stocklin J, Hensen I, Auge H (2011) Multiple common garden experiments sug-
595 gest lack of local adaptation in an invasive ornamental plant. *J Plant Ecol* 4(4): 209-220
596 10.1093/jpe/rtr007
597
- 598 Enders M, Havemann F, Ruland F, Bernard-Verdier M, Catford JA, Gómez-Aparicio L,
599 Haider S, Heger T, Kueffer C, Kühn I, Meyerson LA, Musseau C, Novoa A, Ricciardi A,
600 Sagouis A, Schittko C, Strayer DL, Vilà M, Essl F, Hulme PE, Kleunen M, Kumschick M
601 S, Lockwood JL, Mabey AL, McGeoch MA, Palma E, Pyšek P., Saul WC, Yanneli FA,
602 Jeschke JM (2020) A conceptual map of invasion biology: Integrating hypotheses into a con-
603 sensus network. *Glob Ecol Biog* 29(6): 978-991 10.1111/geb.13082
604
- 605 Fakhr MA, Mazrou YSA, Ellmouni FY, Elsaied A, Elhady M, Elkelish A, Nour IH (2021)
606 Investigating the phenotypic plasticity of the invasive weed *Trianthema portulacastrum* L.
607 *Plants* 11(1): 77 10.3390/plants11010077
608
- 609 Flory SL, Long F, Clay K (2011) Invasive *Microstegium* populations consistently outperform
610 native range populations across diverse environments. *Ecology* 92(12): 2248-2257
611 10.1890/11-0363.1
612
- 613 Friedman J, Twyford AD, Willis JH, Blackman BK (2015) The extent and genetic basis of
614 phenotypic divergence in life history traits in *Mimulus guttatus*. *Mol Ecol* 24(1): 111-122
615 10.1111/mec.13004
616
- 617 Galen C, Shore JS, Deyoe H (1991) Ecotypic divergence in alpine *Polemonium viscosum*: ge-
618 netic structure, quantitative variation, and local adaptation. *Evolution* 45(5): 1218-1228
619 10.1111/j.1558-5646.1991.tb04388.x
620
- 621 Geng Y, Van Klinken RD, Sosa A, Li B, Chen J, Xu YC (2016) The relative importance of
622 genetic diversity and phenotypic plasticity in determining invasion success of a clonal weed
623 in the USA and China. *Front Plant Sci* 7 10.3389/fpls.2016.00213
624
- 625 Ghalambor CK, McKay JK, Carroll SP, Reznick DN (2007) Adaptive versus non-adaptive
626 phenotypic plasticity and the potential for contemporary adaptation in new environments.
627 *Funct Ecol* 21(3): 394-407 10.1111/j.1365-2435.2007.01283.x
628
- 629 Gratani L (2014) Plant Phenotypic Plasticity in Response to Environmental Factors. *Advances in Botany* 1-17
630 10.1155/2014/208747
631
- 632
- 633 Hall MC, Willis JH 2006. Divergent selection on flowering time contributes to local
634 adaptation in *Mimulus guttatus* populations. *Evolution* 60: 2466– 2477
635

- 636 Herden J, Eckert S, Stift M, Joshi J, Kleunen M (2019) No evidence for local adaptation and
637 an epigenetic underpinning in native and non-native ruderal plant species in Germany. *Ecol*
638 *Evol* 9(17): 9412-9426 10.1002/ece3.5325
639
- 640 Hiatt D, Flory SL (2020) Populations of a widespread invader and co-occurring native spe-
641 cies vary in phenotypic plasticity. *New Phyt* 225(1): 584-594 10.1111/nph.16225
642
- 643 Hulme, PE (2007) Phenotypic plasticity and plant invasions: is it all Jack? *Funct Ecol* 22(1):
644 3-7 10.1111/j.1365-2435.2007.01369.x
645
- 646 Hulme PE (2020) Plant invasions in New Zealand: global lessons in prevention, eradication
647 and control. *Biol Inv* 22, 1539–1562
648
- 649 Kawecki TJ, Ebert D (2004) Conceptual issues in local adaptation. *Ecology Letters* 7(12):
650 1225-1241 10.1111/j.1461-0248.2004.00684.x
651
- 652 Kollmann, J, Bañuelos MJ (2004) Latitudinal trends in growth and phenology of the invasive
653 alien plant *Impatiens glandulifera* (Balsaminaceae). *Div Dist* 10(5-6): 377-385
654 10.1111/j.1366-9516.2004.00126.x
655
- 656 Körner, C (2007) The use of altitude in ecological research. *TREE* 22(11): 569-574
657
- 658 Lande R (2015) Evolution of phenotypic plasticity in colonizing species. *Mol Ecol* 24(9):
659 2038-2045 10.1111/mec.13037
660
- 661 Lee-Yaw, JA, Zenni RD, Hodgins KA, Larson BMH, Cousens R, Webber BL (2019) Range
662 shifts and local adaptation: integrating data and theory towards a new understanding of spe-
663 cies' distributions in the Anthropocene. *New Phytologist* 221(2): 644-647 10.1111/nph.15554
664
- 665 Leimu R, Fischer M (2008) A Meta-Analysis of Local Adaptation in Plants. *PLoS ONE* 3(12)
666 e4010 10.1371/journal.pone.0004010
667
- 668 Li XM, She DY, Zhang DY, Liao WJ (2015) Life history trait differentiation and local adap-
669 tation in invasive populations of *Ambrosia artemisiifolia* in China. *Oecologia* 177(3): 669-
670 677 10.1007/s00442-014-3127-z
671
- 672 Li Y, Stift M, Van Kleunen M (2018) Admixture increases performance of an invasive plant
673 beyond first-generation heterosis. *J Ecol* 106(4): 1595-1606 10.1111/1365-2745.12926
674
- 675 Libby WJ (1962) Estimation of variance components of internode length in a cloned popula-
676 tion of *Mimulus guttatus* *Genetics* 47(6): 769-777 10.1093/genetics/47.6.769
677
- 678 Liu Y, Dawson W, Prati D, Haeuser E, Feng Y, Van Kleunen M (2016) Does greater specific
679 leaf area plasticity help plants to maintain a high performance when shaded? *Ann Bot* 118(7):
680 1329-1336 10.1093/aob/mcw180
681
- 682 Lowry, DB, Sobel JM, Angert AL, Ashman TL, Baker RL, Blackman BK, Brandvain Y,
683 Byers KJRP, Cooley AM, Coughlan JM, Dudash MR, Fenster CB, Ferris KG, Fishman L,
684 Friedman J, Grossenbacher DL, Holeski LM, Ivey CT, Kay KM, Koelling VA, Kooyers NJ,
685 Murren CJ, Muir CD, Nelson TC, Peterson ML, Puzey JR, Rotter MC, Seemann JR, Sexton J
686 P, Sheth SN, Streisfeld MA, Sweigart AL, Twyford AD, Vallejo-Marín, M, Willis JH,

- 687 Wright KM, Wu CA, Yuan YW (2019) The case for the continued use of the genus name
688 *Mimulus* for all monkeyflowers. *Taxon* 68(4): 617-623 10.1002/tax.12122
689
- 690 Maron, JL, Elmendorf SC, Vilà M (2007) Contrasting plant physiological adaptation to cli-
691 mate in the native and introduced range of *Hypericum perforatum*. *Evolution* 61(8): 1912-
692 1924 10.1111/j.1558-5646.2007.00153.x
693
- 694 Maron, JL, Vilà M, Bommarco R, Elmendorf S, Beardsley P (2004) Rapid evolution of an in-
695 vasive plant. *Ecol Mono* 74(2): 261-280 10.1890/03-4027
696
697
- 698 McGoey BV, Hodgins KA, Stinchcombe JR (2020) Parallel flowering time clines in native
699 and introduced ragweed populations are likely due to adaptation. *Ecol Evol* 10(11): 4595-
700 4608 DOI: 10.1002/ece3.6163
701
- 702 Molina-Montenegro MA, Acuña-Rodríguez IS, Flores TSM, Hereme R, Lafon A, Atala C,
703 Torres-Díaz C (2018) Is the success of plant invasions the result of rapid adaptive evolution
704 in seed traits? Evidence from a latitudinal rainfall gradient. *Front Plant Sci* 9
705 10.3389/fpls.2018.00208
706
- 707 Moloney KA, Holzappel C, Tielbörger K, Jeltsch F, Schurr FM (2009) Rethinking the com-
708 mon garden in invasion research. *Persp Plant Ecol Evol Syst* 11(4): 311-320
709 <https://doi.org/10.1016/j.ppees.2009.05.002>
710
- 711 Monty A, Mahy G (2009) An explicit test for the contribution of environmental maternal ef-
712 fects to rapid clinal differentiation in an invasive plant. *J Evol Biol* 22(5): 917-926
713 10.1111/j.1420-9101.2009.01728.x
714
- 715 Monty A, Mahy G (2009) Clinal differentiation during invasion: *Senecio inaequidens* (Aster-
716 aceae) along altitudinal gradients in Europe. *Oecologia* 159(2): 305-315 10.1007/s00442-
717 008-1228-2
718
- 719 Moroney JR, Rundel PW, Sork VL (2013) Phenotypic plasticity and differentiation in fitness-
720 related traits in invasive populations of the Mediterranean forb *Centaurea melitensis* (Aster-
721 aceae). *Am J Bot* 100(10): 2040-2051 10.3732/ajb.1200543
722
- 723 Noble DWA, Radersma R, Uller T (2019) Plastic responses to novel environments are biased
724 towards phenotype dimensions with high additive genetic variation. *Proc Nat Acad Sci*
725 116(27): 13452-13461 10.1073/pnas.1821066116
726
- 727 Nůněš Farfán J, Schlichting CD (2001) Evolution in Changing Environments: The "syn-
728 thetic" work of Clausen, Keck, and Hiesey. *Quart Rev Biol* 76: 433 - 457
729
- 730 Oduor AMO, Leimu R, Van Kleunen M (2016) Invasive plant species are locally adapted just
731 as frequently and at least as strongly as native plant species. *J Ecol* 104(4): 957-968
732 10.1111/1365-2745.12578
733
- 734 Olsson K, Ågren J (2002) Latitudinal population differentiation in phenology, life history and
735 flower morphology in the perennial herb *Lythrum salicaria*. *J Evol Biol* 15(6): 983-996
736 10.1046/j.1420-9101.2002.00457.x
737

- 738 Oneal E, Lowry DB, Wright KM, Zhu Z, Willis JH (2014) Divergent population structure
739 and climate associations of a chromosomal inversion polymorphism across the *Mimulus gut-*
740 *tatus* species complex. *Mol Ecol* 23(11): 2844-2860 [10.1111/mec.12778](https://doi.org/10.1111/mec.12778)
741
- 742 Pahl AT, Kollmann J, Mayer A, Haider S (2013) No evidence for local adaptation in an inva-
743 sive alien plant: field and greenhouse experiments tracing a colonization sequence. *Ann Bot*
744 112(9): 1921-1930 [10.1093/aob/mct246](https://doi.org/10.1093/aob/mct246)
745
- 746 Palacio-López K, Gianoli E (2011) Invasive plants do not display greater phenotypic plastic-
747 ity than their native or non-invasive counterparts: a meta-analysis. *Oikos* 120(9): 1393-1401
748
- 749 Pigliucci, M, Whitton J, Schlichting CD (1995) Reaction norms of Arabidopsis. I. Plasticity
750 of characters and correlations across water, nutrient and light gradients." *J Evol Biol* 8(4):
751 421-438.
752
- 753 Pigliucci M (2001) Phenotypic plasticity: Beyond nature and nurture. Baltimore, MD, USA:
754 Johns Hopkins University Press. [10.1046/j.1420-9101.1995.8040421.x](https://doi.org/10.1046/j.1420-9101.1995.8040421.x)
755
- 756 R Core Development Team. (2018) R: a language and environment for statistical compu-
757 ting, v.3.1.2. Vienna, Austria: R Foundation for Statistical Computing.
758
- 759 Radersma RD, Noble WA, Uller T (2020) Plasticity leaves a phenotypic signature during
760 local adaptation. *Evol Lett* 4(4): 360-370 <https://doi.org/10.1002/evl3.185>
761
- 762 Rapson GL, Wilson JB (1992) Genecology of *Agrostis capillaris* L. (Poaceae) an invader into
763 New Zealand: 1. Floral phenology. *NZJ Bot* 30(1): 1-11 [10.1080/0028825x.1992.10412880](https://doi.org/10.1080/0028825x.1992.10412880)
764
- 765 Richards CL, Bossdorf O, Muth NZ, Gurevitch J, M. Pigliucci (2006) Jack of all trades, mas-
766 ter of some? On the role of phenotypic plasticity in plant invasions. *Ecol Lett* 9(8): 981-993
767 [10.1111/j.1461-0248.2006.00950.x](https://doi.org/10.1111/j.1461-0248.2006.00950.x)
768
- 769 Ritland C, Ritland K (1989) Variation of sex allocation among eight taxa of the *Mimulus gut-*
770 *tatus* species complex (Scrophulariaceae). *A J Bot* 76(12): 1731 [10.2307/2444472](https://doi.org/10.2307/2444472)
771
- 772 Scheepens, JF, Frei ES, Stöcklin J (2010) Genotypic and environmental variation in specific
773 leaf area in a widespread Alpine plant after transplantation to different altitudes. *Oecologia*
774 164(1): 141-150 [10.1007/s00442-010-1650-0](https://doi.org/10.1007/s00442-010-1650-0)
775
- 776 Schlichting C, Pigliucci M (1998) Phenotypic Evolution: A Reaction Norm Perspective,
777 Sinauer.
778
- 779 Shelby N, Hulme PE, Van Der Putten WH, McGinn KJ, Weser C, Duncan RP (2016) No dif-
780 ference in the competitive ability of introduced and native *Trifolium* provenances when
781 grown with soil biota from their introduced and native ranges. *AoB Plants* 8: plw016
782 [10.1093/aobpla/plw016](https://doi.org/10.1093/aobpla/plw016)
783
- 784
- 785 Si, CC, Dai ZC, Lin Y, Qi SS, Huang P, Miao SL, Du DL (2014) Local adaptation and phe-
786 notypic plasticity both occurred in *Wedelia trilobata* invasion across a tropical island. *Biol*
787 *Invasions* 16(11): 2323-2337 [10.1007/s10530-014-0667-4](https://doi.org/10.1007/s10530-014-0667-4)
788

- 789 Truscott, AM, Palmer SC, Soulsby C, Westaway S, Hulme PE (2008) Consequences of inva-
790 sion by the alien plant *Mimulus guttatus* on the species composition and soil properties of ri-
791 parian plant communities in Scotland. *Perspectives Plant Ecol Evol Syst* 10(4): 231-
792 24010.1016/j.ppees.2008.04.001
- 793
- 794 Turesson G (1922) The species and variety as ecological units. *Hereditas* 3: 100–113
- 795
- 796 Vallejo-Marín M, Friedman J, Twyford AD, Lepais O, Ickert-Bond SM, Streisfeld MA, Yant
797 L, Van Kleunen M, Rotter MC, Puzey JR (2021) Population genomic and historical analysis
798 suggests a global invasion by bridgehead processes in *Mimulus guttatus*. *Comm Biol* 4 (1):
799 327 <https://doi.org/10.1038/s42003-021-01795-x>
- 800
- 801 Van Dijk H, Hautekèete NC (2014) Evidence of genetic change in the flowering phenology
802 of sea beets along a latitudinal cline within two decades. *J Evol Biol* 27(8): 1572-
803 158110.1111/jeb.12410
- 804
- 805 Van Kleunen M, Fischer M (2008) Adaptive rather than non-adaptive evolution of *Mimulus*
806 *guttatus* in its invasive range. *Basic App Ecol* 9(3): 213-223 10.1016/j.baae.2007.03.006
- 807
- 808 Van Kleunen M, Fischer M (2001) Adaptive evolution of plastic foraging responses in a
809 clonal plant. *Ecology* 82, 3309 3319 [https://doi.org/10.1890/0012-](https://doi.org/10.1890/0012-9658(2001)082[3309:AEOPFR]2.0.CO;2)
810 [9658\(2001\)082\[3309:AEOPFR\]2.0.CO;2](https://doi.org/10.1890/0012-9658(2001)082[3309:AEOPFR]2.0.CO;2)
- 811
- 812 Vanwallendael A, Hamann E, Franks SJ (2018) Evidence for plasticity, but not local adapta-
813 tion, in invasive Japanese knotweed (*Reynoutria japonica*) in North America. *Evol Ecol*
814 32(4): 395-410 10.1007/s10682-018-9942-7
- 815
- 816 Villellas, J, Ehrlén J, Crone EE, Csergő AM, Garcia MB, Laine AL, Roach DA, Salguero-
817 Gómez R, Wardle GM, Childs DZ, Elderd BD, Finn A, Munné-Bosch S, Bachelot B, Bódis J,
818 Bucharova A, Caruso CM, Catford JA, Coghill M, Compagnoni A, Duncan RP, Dwyer JM,
819 Ferguson A, Fraser LH, Griffoul E, Groenteman R, Hamre LN, Helm A, Kelly R, Laanisto L,
820 Lonati M, Münzbergová Z, Nuche P, Olsen SL, Oprea A, Pärtel M, Petry WK, Ramula S,
821 Rasmussen PU, Enri SR, Roeder A, Roscher C, Schultz C, Skarpaas O, Smith AL, Tack
822 AJM, Töpper JP, Vesik PA, Vose GE, Wandrag E, Wingler A, Buckley YM (2021) Pheno-
823 typic plasticity masks range-wide genetic differentiation for vegetative but not reproductive
824 traits in a short-lived plant. *Ecol Lett* 24(11): 2378-2393 10.1111/ele.13858
- 825
- 826 Webb CJ, Sykes WR, Garnock-Jones PJ (1988) *Flora of New Zealand: naturalised Pterido-*
827 *phytes, Gymnosperms, Dicotyledons*, Botany Division, DSIR
- 828
- 829 Weiner J, Muller-Scharer MSH, Stoll P, Schmid B (1997) How important are environmental
830 and maternal effects in plants? A study with *Centaurea maculosa*. *J Ecol* 84: 133-142
- 831
- 832 Williams JL, Auge H, Maron JL (2008) Different gardens, different results: native and intro-
833 duced populations exhibit contrasting phenotypes across common gardens. *Oecologia* 157(2):
834 239-248 10.1007/s00442-008-1075-1
- 835
- 836 Wu, CA, Lowry DB, Cooley AM, Wright KM, Lee YW, Willis JH (2008) *Mimulus* is an
837 emerging model system for the integration of ecological and genomic studies. *Heredity*
838 100(2): 220-230 10.1038/sj.hdy.6801018
- 839

840 Yuan W, Pigliucci M, Richards CL (2022) Rapid phenotypic differentiation and local adapta-
841 tion in Japanese knotweed s.l. (*Reynoutria japonica* and *R. × bohemica* Polygonaceae) invad-
842 ing novel habitats, Cold Spring Harbor Laboratory
843 <https://doi.org/10.1101/2022.03.07.483296>

844
845 Yu-Peng G (2007) Phenotypic plasticity rather than locally adapted ecotypes allows the inva-
846 sive alligator weed to colonize a wide range of habitats. *Biol Inv* 9 (3): 245-256
847 <https://doi.org/10.1007/s10530-006-9029-1>

848
849 Zhao Y, Yin G, Pan Y, Gong X (2018) Ecological and genetic divergences with gene flow of
850 two sister species (*Leucomeris decora* and *Nouelia insignis*) driving by climatic transition in
851 southwest china. *Front Plant Sci* 9 <https://doi.org/10.3389/fpls.2018.00031>

852
853

854

855 **Statements & Declarations**

856 **Funding**

857 *This work was supported by the Koiata Botanical Trust, Grant number HC418. Author M.W.*
858 *has received research support in way of a Roland Stead Postgraduate Scholarship and a*
859 *Laura J. Clad Memorial Scholarship.*

860 **Competing Interests**

861 *The authors have no relevant financial or non-financial interests to disclose*

862 Please refer to the “Competing Interests” section below for more information on how to
863 complete these sections.

864 **Author Contributions**

865 All authors contributed to the study conception and design. Material preparation, data
866 collection was mainly by M.W. with contributions from H.C. Data analysis were performed
867 by Daniel Gerhard. The main draft of the manuscript was written by Hazel Chapman and all
868 authors commented on previous versions of the manuscript. All authors read and approved
869 the final manuscript.

870