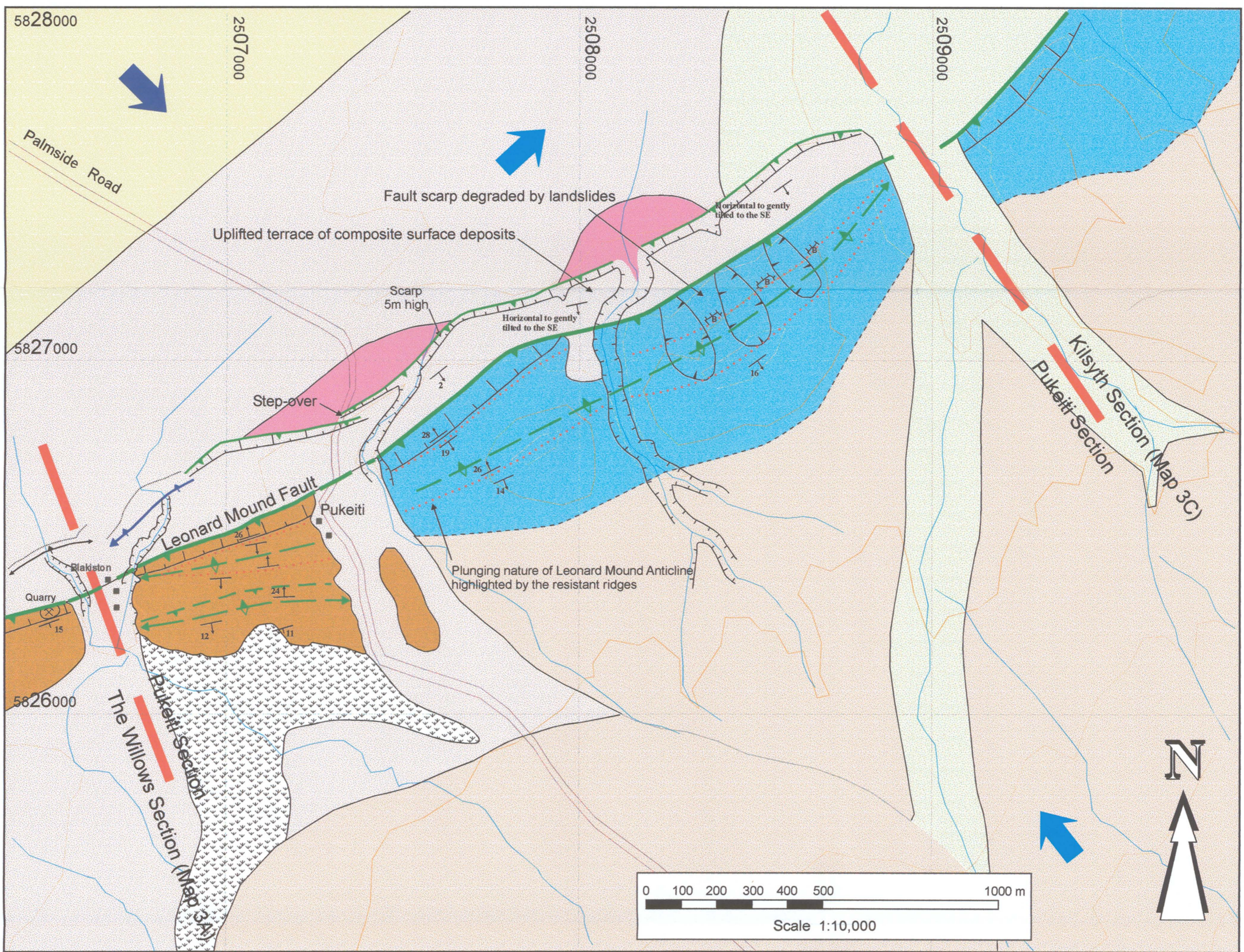


MAP3B: TECTONIC GEOMORPHOLOGY OF THE PUKEITI SECTION, LEONARD MOUND FAULT SYSTEM



GEOLOGICAL SYMBOLS

Thrusts:

- Known location
- Inferred location

Anticlines:

- Steep limb
- Shallow limb
- Plunging asymmetric anticline
- Steep limb
- Gently tilted limb
- Leading edge fold with zone of deformation
- Amount of vertical displacement across folds

Activity Class
(for description of activity classes see Chapter 1.6)

- Class 1
- Class 2
- Class 3
- Inactive

Contacts:

- Located accurately
- Located approximately
- Internal fan boundary

Bedding:

- Strike and dip
- Inferred strike and dip
- Resistant bed forming a prominent ridge

Scarps:

- Fault scarp
- Stream terrace
- Bench

Other:

- Landslide
- Incised stream
- Dip slope

- Flow direction of streams
- Flow direction of Waiau River during Late Pleistocene (from old braid channels)

TOPOGRAPHICAL REFERENCE

- Swampy ground (often on downthrown side of leading edge folds)
- Road
- Topographic contour
- Stream

GEOLOGICAL UNITS

- Leonard Mound fans
- Burnham Formation
- Western Lowry Peaks Range Alluvial Fans
- Central Lowry Peaks Range Alluvial Fans
- Composite Surface
- Kowai Formation
- Mount Brown Formation

Map drafted by Mark Armstrong (2000)